



# SR-650HA

Ethernet-compatible Small 2D Code Reader, High-resolution Type



\*Please note that accessories depicted in the image are for illustrative purposes only and may not be included with the product.

ⓘ

This model has been discontinued.  
Compliance with the certification standard is ensured as of the time of shipment from our company.

Contact Us: 1-888-539-3623

Recommended Replaceable Products: [Ethernet-compatible 2D Code Reader, High-resolution Type - SR-750HA](#)

## Specifications

Model			SR-650HA
Type			High resolution
Receiver	Sensor	CMOS Image Sensor	
	Number of pixels	752×480 pixels	
Lighting	Light source	High intensity red LED 630 nm	
	LED class	Class 1 LED Product (IEC60825-1)	
Laser pointer	Light source	Visible semiconductor laser, Wavelength 660 nm	
	Output	60 μW	
	Pulse duration	200 μs	
	Laser class	Class 1 Laser Product (IEC60825-1, FDA (CDRH) Part 1040.10*1)	
I/O specifications	Control input	Number of Inputs	2
		Input type	Bidirectional voltage input
		Maximum rating	26.4 VDC
		Minimum ON voltage	15 VDC
		Maximum OFF current	0.2 mA or less
	Control output	Number of Outputs	3
		Output type	Photo MOS relay output
		Maximum rating	30 VDC
		Maximum load current	1 output: 50 mA or less, 3 Total output 100 mA or less
		Leakage current when OFF	0.1 mA or less
		Residual voltage when ON	1 V or less
	Ethernet	Communication standard	10BASE-T/100BASE-TX Cat.5
		Supported protocol	TCP/IP, EtherNet/IP™, FTP, BOOTP
	Serial communication	Communication standard	RS-232C compliant
		Transmission speed	9600, 19200, 38400, 57600, 115200 bps

		Synchronization method	Asynchronous
Reading specifications	Supported symbol	2D	QR, MicroQR, DataMatrix (ECC200), PDF417, MicroPDF, MaxiCode, Composite character (CC-A, CC-B, CC-C)
	Minimum resolution		0.082 mm 0.003"
	Reading distance (typical examples)	DataMatrix QR	22 to 50 mm 0.87" to 1.97" (Cell size= 0.25 mm 0.01")
	Focal distance		38 mm 1.50"
	Field of View (at focal distance)		26.6 mm×17.0 mm 1.05"×0.67"
Rating	Power voltage		Control port: 24 VDC ±10 % or Ethernet port: PoE TypeA/B 36 to 57 V (Cannot supply at the same time)*2
	Current consumption		Control port: 220 mA (When 24 VDC power supply is used) Ethernet port: PoE Power Class 2*3
Environmental resistance	Enclosure rating		IP65
	Ambient light		Sunlight: 10,000 lux, Incandescent lamp: 6,000 lux, Fluorescent lamp: 2,000 lux
	Ambient temperature		0 to +45 °C 32 to 113 °F
	Storage temperature		-10 to +50 °C 14 to 122 °F
	Relative humidity		35 to 95 % RH (No condensation)
	Storage relative humidity		
	Operating environment		No dust or corrosive gases present
	Vibration resistance		10 to 55 Hz, Double amplitude 1.5 mm 0.06", 55 to 500 Hz, Acceleration 5G, 3 hours in each of the X, Y, and Z directions
Weight			Approx. 160 g

\*1 The laser classification for FDA (CDRH) is implemented based on IEC60825-1 in accordance with the requirements of Laser Notice.

\*2 To comply with CSA No.61010-1/UL61010-1/IEC61010-1, use a power supply meeting the following criteria:

- provides Class 2 output as defined in the CEC and NEC, or
- evaluated as a Limited Power Source as defined in CAN/CSA-C22.2 No.60950-1/UL60950-1/IEC60950-1.

\*3 Peak operating current for PoE Power Class 2: 210 mA maximum.

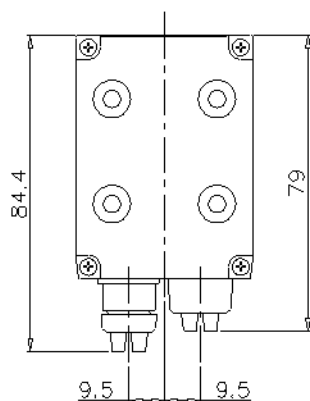
## Dimensions

\* Download CAD file or product manual for larger image/text and more detail.

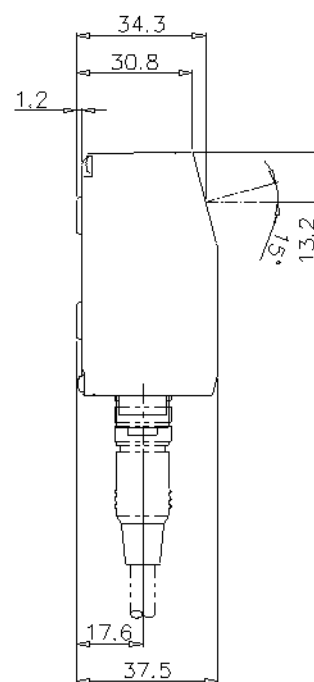
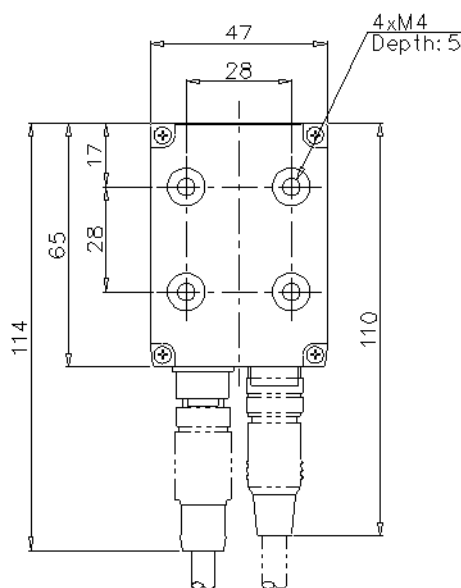
sr-750\_751\_750ha\_650\_651\_650ha\_dimension\_01.gif

SR-750/751/750HA/650/651/650HA

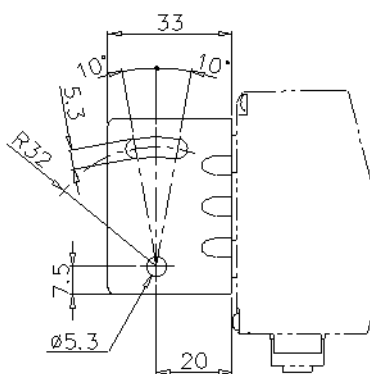
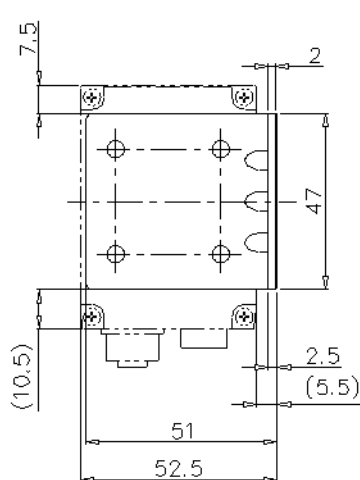
With port cover



With cable



When mounting bracket is attached



Screw hole dimensions

