



# SR-610

Ultra Small 2D Code Reader, Medium-distance Type



\*Please note that accessories depicted in the image are for illustrative purposes only and may not be included with the product.

This model has been discontinued.

Compliance with the certification standard is ensured as of the time of shipment from our company.

Contact Us: 1-888-539-3623

Recommended Replaceable Products: [AI-Powered Code Reader - SR-X series](#)

## Specifications

Model			SR-610
Type			Middle-range
Laser pointer	Light source		Visible semiconductor laser (wavelength: 660 nm)
	Output		90 μW
	Pulse duration		200 μs
	Laser class		Class 1 Laser Product (IEC60825-1, FDA (CDRH) Part1040.10)*1*2
Lights	Light source		High-intensity red LED
Reading	Supported codes	Barcode	GS1 Databar; CODE39; ITF; Industrial 2 of 5; NW-7 (Codabar); JAN, EAN, UPC; CODE128; COOP 2 of 5; CODE93
		2D code	QR code, Micro QR code, DataMatrix, PDF417, MicroPDF417, MaxiCode, composite symbol (Composite Component)
	Minimum resolution	Barcode	0.127 mm 0.005"
		2D code	0.25 mm 0.01"
	Reading distance (typical examples)	DataMatrix	40 mm to 173 mm 1.57" to 6.81" (cell size: 0.508 mm 0.02")
		QR	35 mm to 188 mm 1.38" to 7.40" (cell size: 0.508 mm 0.02")
		Barcode	44 mm 1.73" to 205 mm 8.07" (narrow bar width: 0.508 mm 0.02")
	Focal point		100mm 3.94"
	Reading view range (at the focal length)		70.6 mm 2.78" x 45.0 mm 1.77"
	Reading time (Typical)		21 ms (focal length for 21 × 21 QR codes)
Terminal block	Input	Number of inputs	2 (IN1 and IN2)
		Input type	No-voltage input
	Output	Number of outputs	4 (OUT1, OUT2, OUT3, and OUT4)
		Output type	NPN open collector
		Rated load	24 VDC, 30 mA
		Leakage current when OFF	0.1mA or less
		Residual voltage when ON	0.8V or less
I/O specifications	Serial interface	Communication method	Conforms to EIA RS-232C
		Communication speed	9600, 19200, 38400, 57600, 115200 bps

		Synchronization between the transmitter and receiver	Asynchronous
		Data bit length	7 or 8 bits
		Stop bit length	1 bit or 2 bits
		Parity check	None, odd, even
		USB	Conforms to USB 2.0 Full Speed
Rating	Power voltage	5 VDC +5 %, -10 %	
	Current consumption	630 mA or less*3	
Environmental resistance	Enclosure rating	IP65	
	Ambient light	Sunlight: 10,000 lux, Incandescent lamp: 6,000 lux	
	Ambient temperature	0 to +45 °C 32 to 113 °F	
	Storage temperature	-10 to +50 °C 14 to 122 °F	
	Relative humidity	35 to 95 % RH (No condensation)	
	Operating environment	No dust or corrosive gases present	
	Vibration resistance	10 to 55 Hz, Double amplitude 1.5 mm 0.06", 3 hours in each of the X, Y, and Z directions	
Weight		Approx. 160 g	

<sup>\*1</sup> The laser classification for FDA (CDRH) is implemented based on IEC60825-1 in accordance with the requirements of Laser Notice.

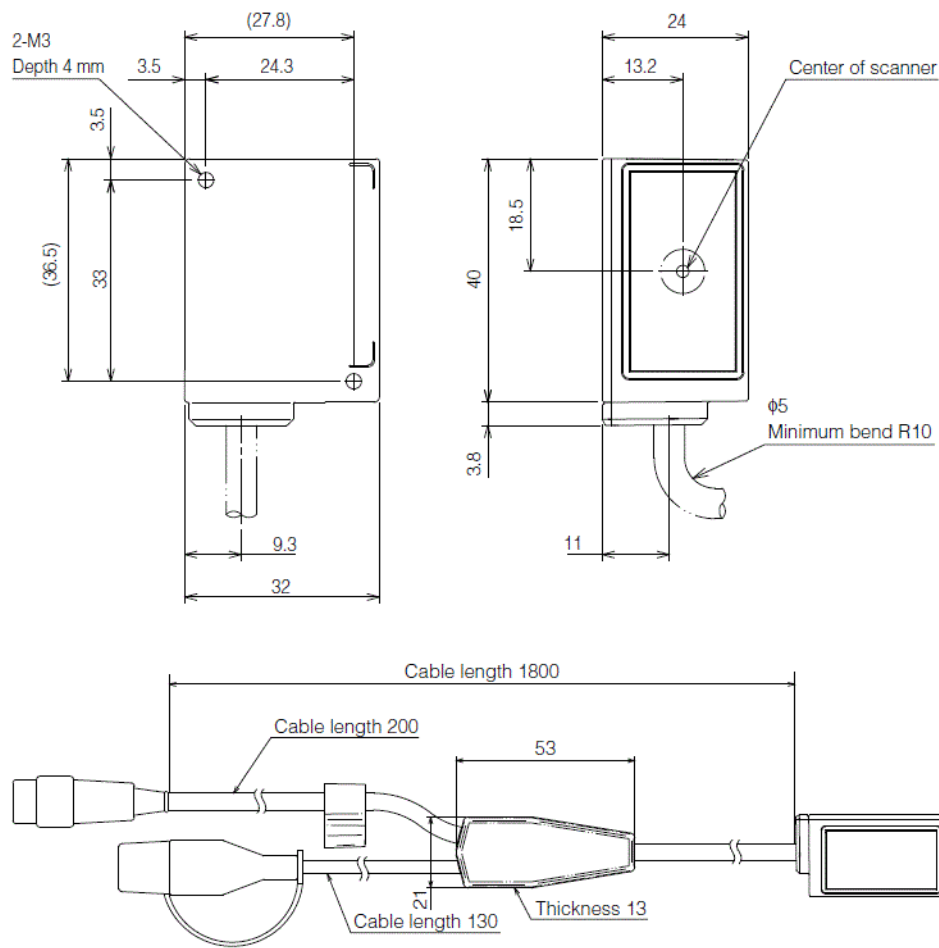
<sup>\*2</sup> Use the Limited Power Source defined in UL/IEC60950-1 to comply with UL/IEC60950-1.

<sup>\*3</sup> In order to conform with UL/IEC60950-1, use a Limited Power Source defined by UL/IEC60950-1.

# Dimensions

\* Download CAD file or product manual for larger image/text and more detail.

■ SR-600/610/600HA



Unit: mm