



MK-G1000PW

Continuous Inkjet Printer White ink

CE

*Please note that accessories depicted in the image are for illustrative purposes only and may not be included with the product.

Specifications

| | |
|-----------------------------------|---|
| Model | MK-G1000PW |
| Touch panel console | MK-P5 |
| Character height | 1 to 12 mm 0.04" to 0.47" |
| Maximum number of printable lines | 6 |
| Dot configuration (vertical) | 5, 7, 9, 10, 12, 14, 16, 24, 32 dots |
| Font | Original, Serif, Sans Serif |
| Character types | Alphabetic characters, numbers, katakana, hiragana, symbols, kanji (JIS levels 1 and 2), Chinese (GB2312), Latin characters, logotypes, custom characters (fonts created by users) |
| Barcodes | CODE39, ITF, NW7 (Codabar), 2of5, CODE128, JAN/EAN/UPC, check digit addition function (except for 2of5) |
| 2D codes | QR code models 1 and 2, Micro QR, DataMatrix (ECC200) |
| Head distance | 15 mm 0.59" (24 dots or less), 20 mm 0.79" (25 dots or more), 35 mm 1.38" |
| Head direction | All directions |
| Positioning guide | Guide printing, guide beam emission |
| Maximum printing speed | 2525 characters/sec *1 |
| Print data registration | 500 settings |
| Functions | Automatic calendar, expiration date, hold printing for desired time, automatic counter, 2- to 36-number system counter, automatic operation, character direction setting (90, 180, 270 degrees), double-width character, logo creation, font creation, character height and width adjustment, sensor pass filter, workpiece-stop alarm, input time constant setting, barcode comparison setting switch, automatic setting switch at print completion (group printing), terminal block monitor, communication buffer, error level change, CV-X link, IV2 link, MK link, smart startup/shutdown/recovery (when connected to MK Dock), smart program change, operation report (when connected to Operation Assist Camera), Event Recording (when connected to Operation Assist Camera), access rights configuration, Web Console *2, E-mail notifications, Customization functions |
| Maintenance functions | Automatic nozzle cleaning, ink draining, internal cleaning, jet operation (nozzle and gutter suction, intermittent spraying), error display, error history, maintenance history, internal path monitor, maintenance guidance, error clearing guidance, auto-shower, sleep mode (when connected to MK Dock), path recovery |
| Input (NPN/PNP) | Printing start, encoder (A, B), setting number selection, setting number switching, printing start disabling, printing stop, printing direction switching, counter/group reset, counter increase (startup), counter decrease (shut down), error clearing, head detection input, Event Recording input (when connected to Operation Assist Camera) |
| Output (NPN/PNP) | Error, caution, printing ready, setting switch ready, busy (printing), printing complete, counter complete (image capture trigger), service power supply (24 V) |
| Console display language | Japanese, English, Chinese, Thai, German, French, Italian, Spanish, Portuguese, Dutch, Polish, Czech, Hungarian, Slovenian |
| Interface | RS-232C, USB 2.0*3, Ethernet (100Base-TX/10Base-T) |
| Print head cable length | 4 m 13.1' |

| | | |
|--------------------------------------|---------------------------------|--|
| Console cable length | | |
| Operation Assist Camera cable length | | 2.8 m 9.2' *4 |
| MK Dock cable length | | 4 m 13.1' *4 |
| Ratings | Power voltage | Single-phase, 100 to 240 VAC ±10%, 50/60 Hz |
| | Power consumption | When stopped: 40 W / During printing: 60 W |
| Environmental resistance | Ambient temperature | 5 to 40°C 41 to 104°F |
| | Ambient temperature for storage | -10 to +60°C 14 to 140°F (No freezing) |
| | Relative humidity | 0 to 90% RH |
| Housing | | Stainless steel |
| Enclosure rating | | IP55 *5 |
| Drop resistance | | Compliant with MIL-STD-810G Change 1 Method 516.7 Procedure IV Transit Drop *6 |
| Weight | Main unit | 31.5 kg |
| | Console | 1.7 kg (with jacket: 2.1 kg) |
| | Operation Assist Camera | 0.25 kg *4 |
| | MK Dock | MK-D1A: 1.0 kg, MK-D1B: 1.15 kg *4 |
| Dimensions | | 465 × 388 × 499 mm 18.31" × 15.28" × 19.65" (W × D × H) |

*1 With 5-dot character, 1-line printing with 1-dot character spacing.

*2 The Web Console can only be used in the following environments. Microsoft Internet Explorer 11, Microsoft Edge 84, Google Chrome 84, Mozilla Firefox 79, iOS/Safari 604, Android OS 9/Chrome 84.

*3 Usable size for USB memory devices: 65 × 25 × 18 mm 2.56" × 0.98" × 0.71" (W × D × H)

*4 Operation Assist Camera and MK Dock are optional accessories.

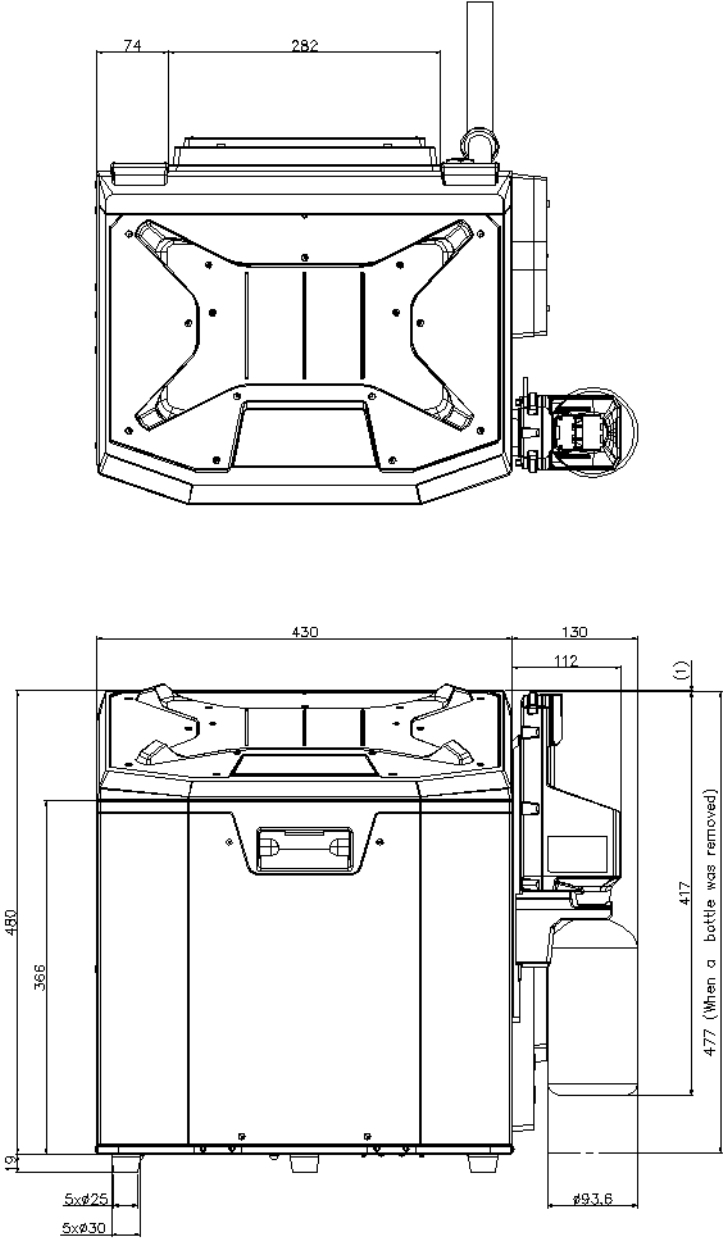
*5 The print head is IP55-rated when not ejecting ink. The console, Operation Assist Camera and the MK Dock (without waste ink bottle attached) are also IP55-rated.

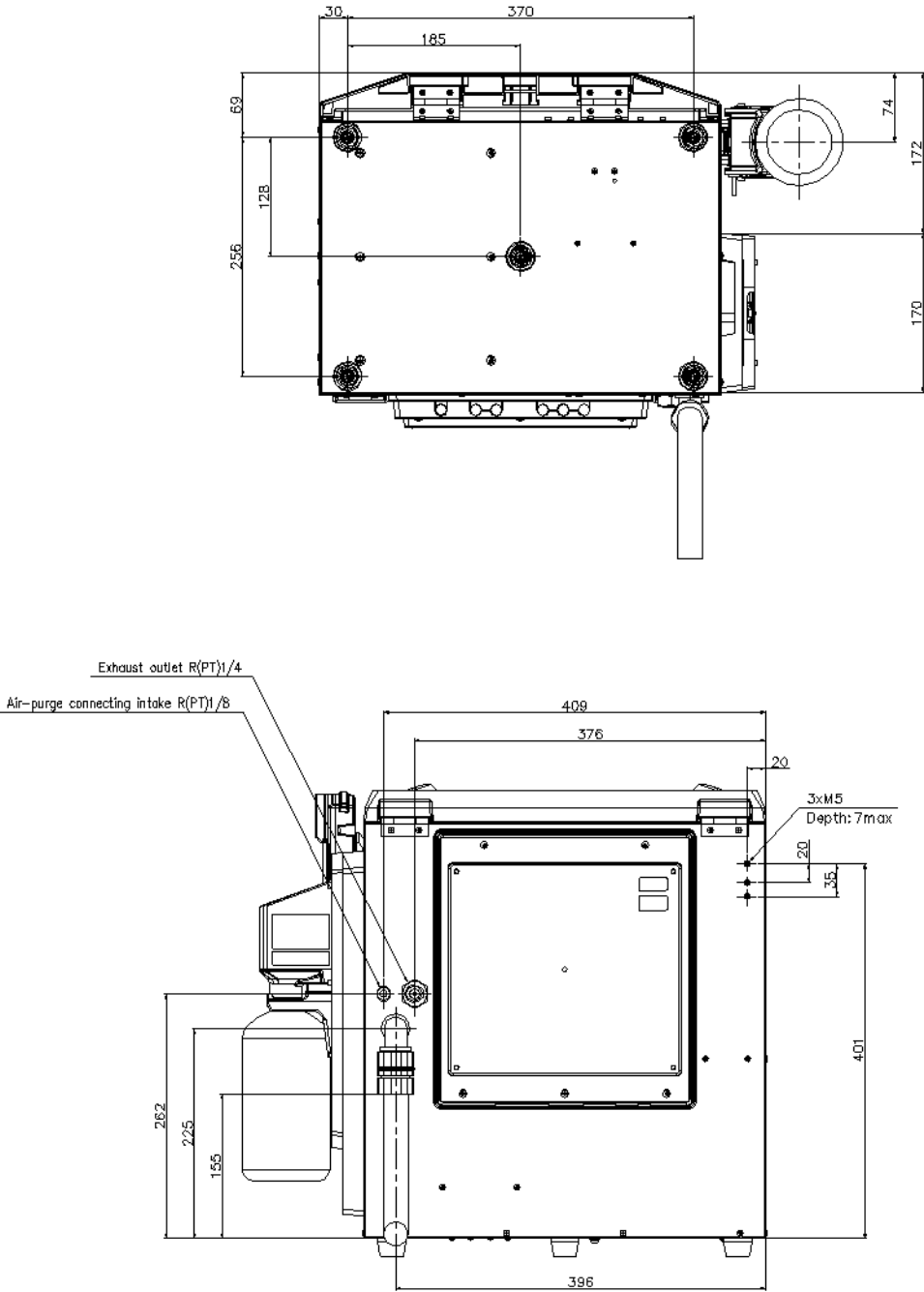
*6 Print head, console, and Operation Assist Camera only. When the print head and console are fitted with a jacket. The drop resistance does not guarantee against destruction or failure.

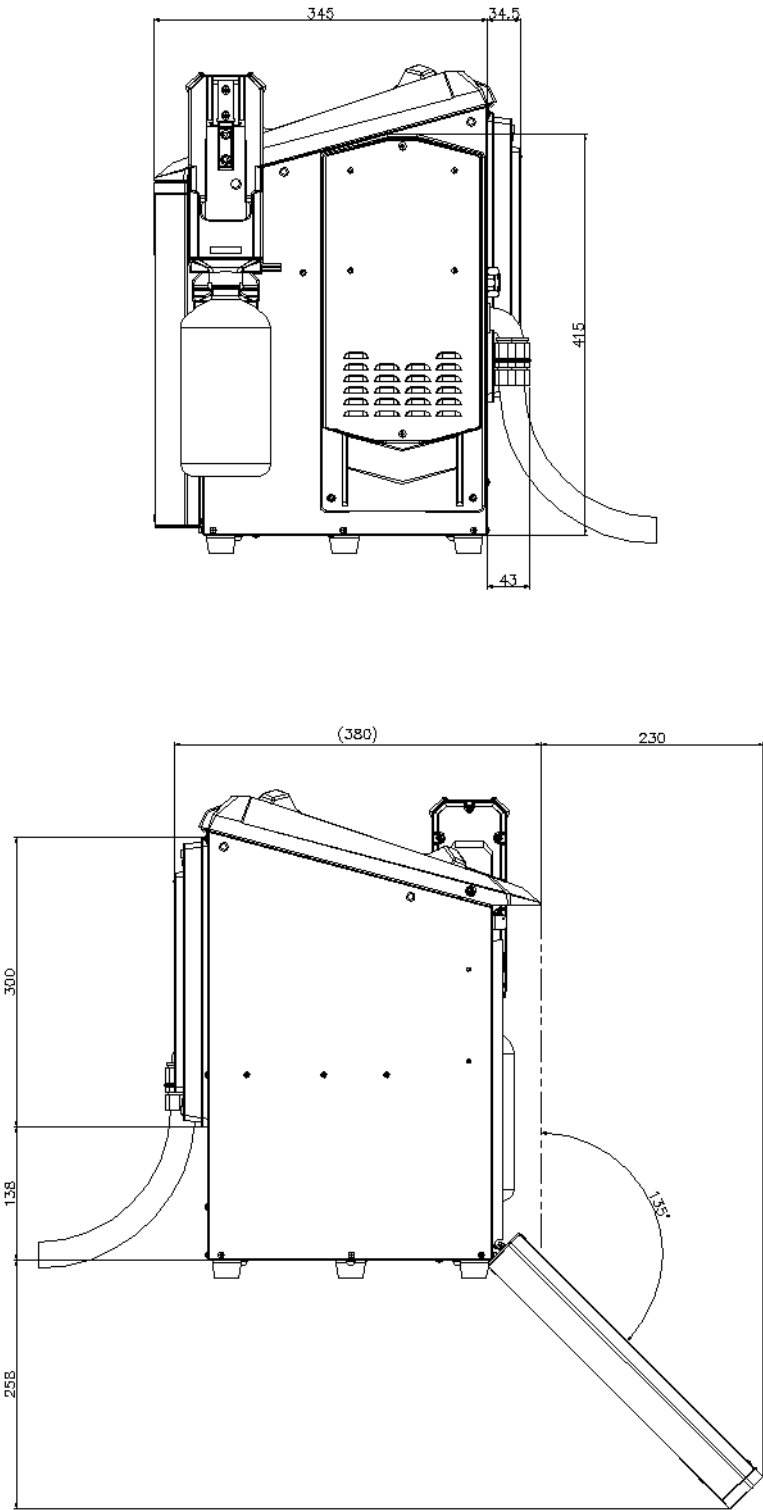
Dimensions

* Download CAD file or product manual for larger image/text and more detail.

MK-G1000/D1A

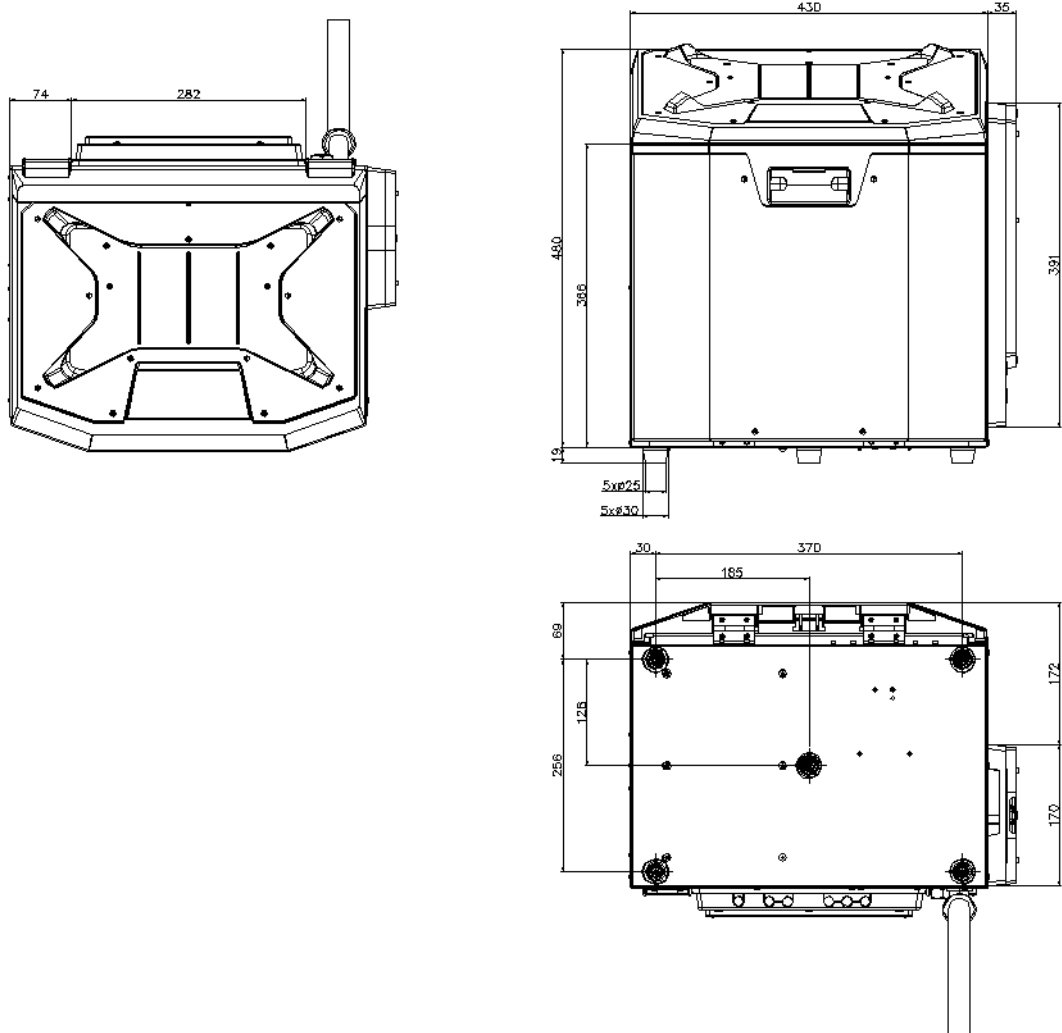


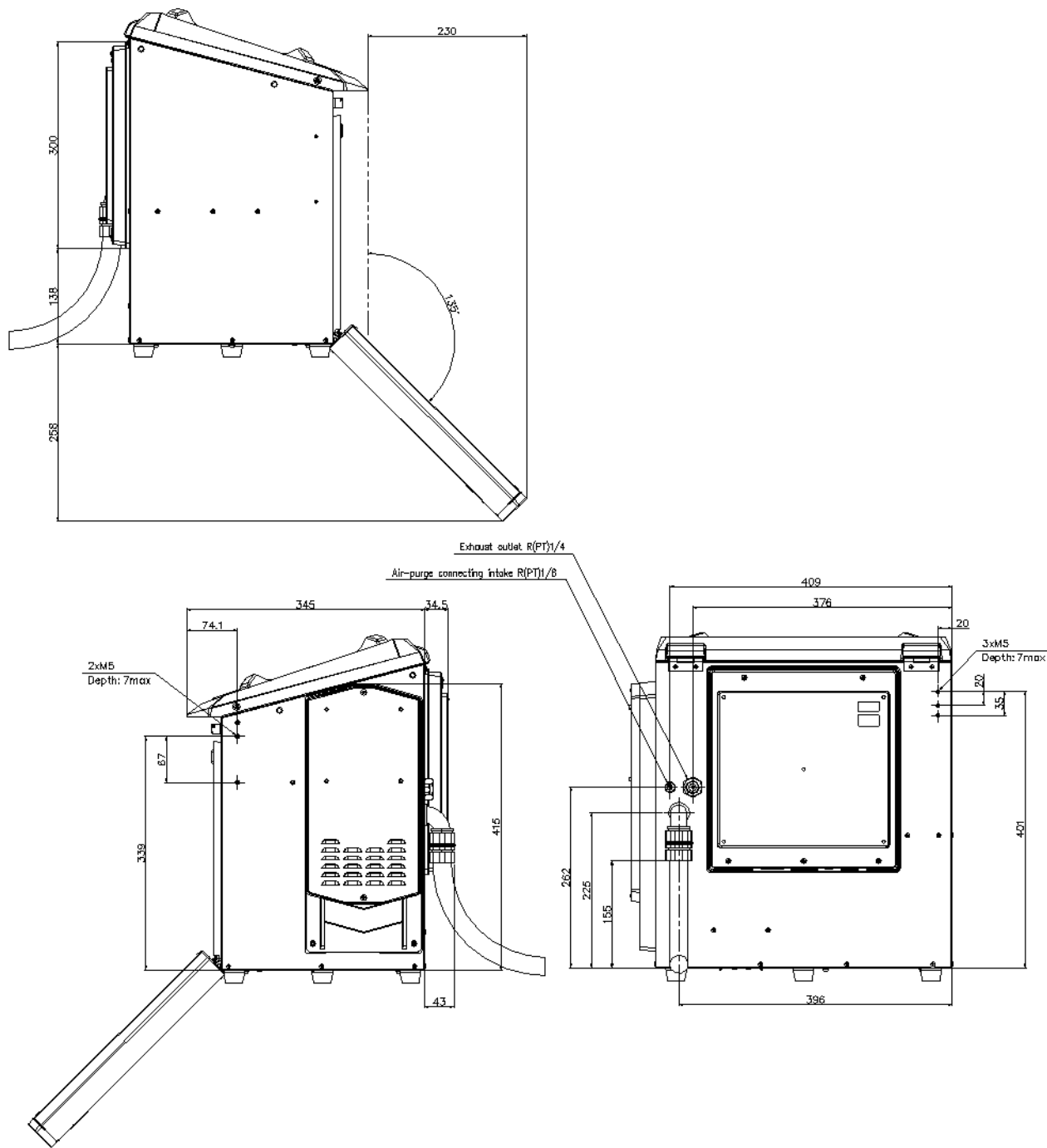




MK—G1000

Controller





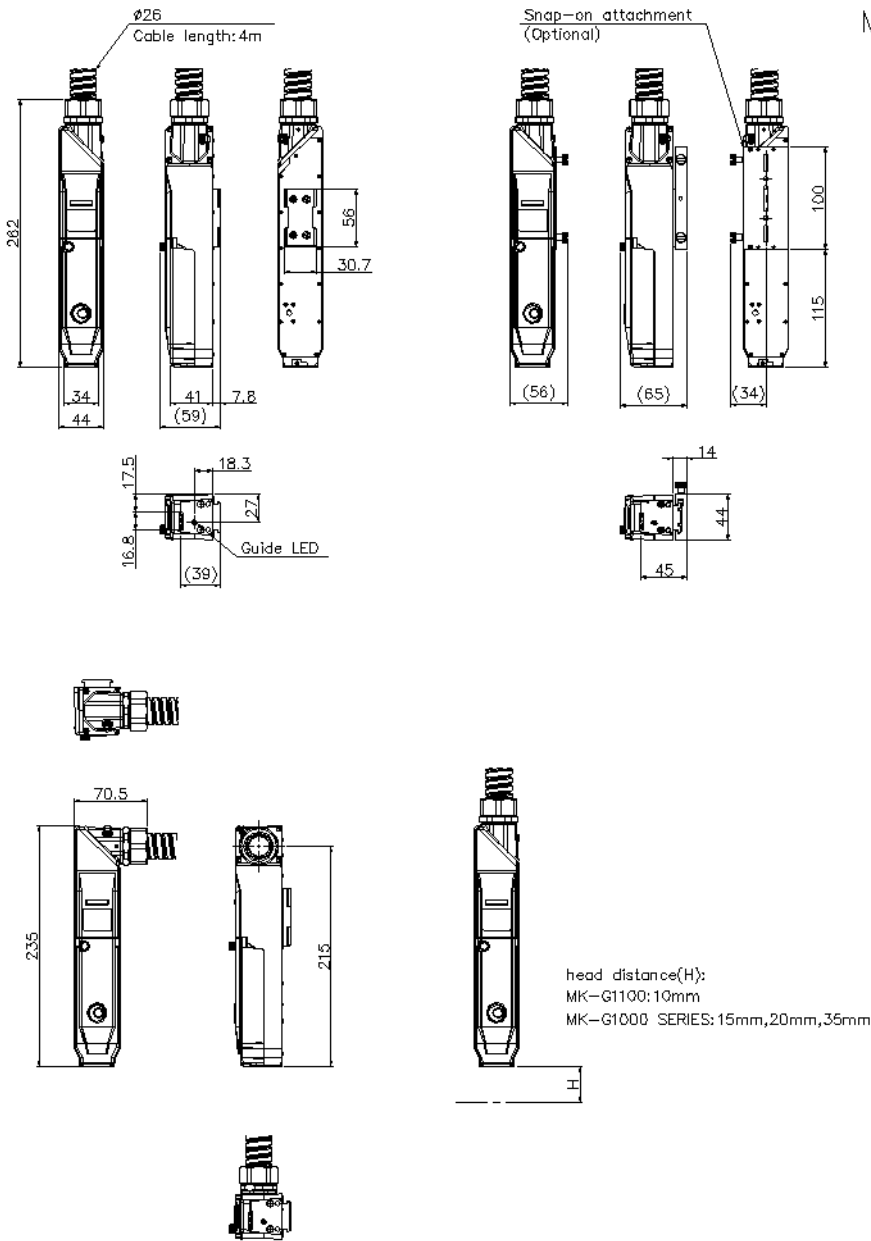
Technical drawings of the LED strip light assembly, showing various views and dimensions:

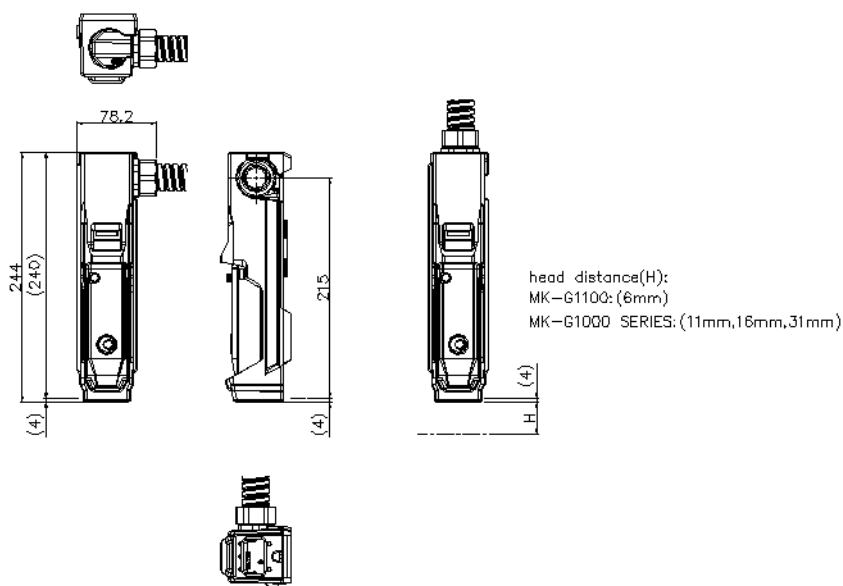
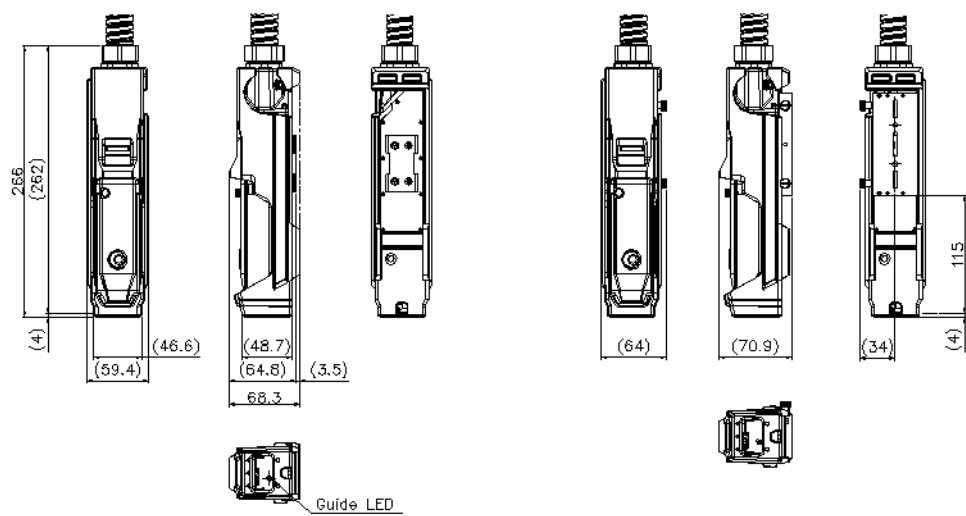
- Top View (Left):** Shows the overall length of 262 and the cable length of 4m. Dimensions include 34, 44, 41, 7.8, and (59).
- Side View (Left):** Shows the height of 16.8 and the width of 17.5. The Guide LED is indicated.
- Bottom View (Left):** Shows the width of 18.3 and 12.7. The dimension (31) is also shown.
- Top View (Middle):** Shows the overall length of 100 and 115. Dimensions include (56), (65), and (34).
- Side View (Middle):** Shows the height of 70.5 and 235. The dimension 70.5 is also shown.
- Bottom View (Middle):** Shows the width of 14 and 44. The dimension 45 is also shown.
- Top View (Right):** Shows the overall length of 215.
- Side View (Right):** Shows the height of 215.

Technical drawing of a mechanical part. The main view shows a cross-section of a cylindrical component with a total length of 100. The left end has a diameter of 12 and a width of 4.4. The right end has a diameter of 8 and a width of 4.6. The part features two slots: Slot a(*1) and Slot b(*2). The distance between the centers of the slots is 33.2. The distance from the left end to the center of Slot a(*1) is 69. The distance from the right end to the center of Slot b(*2) is 39. The part is labeled with 2xM6, indicating two M6 screws. Two detail views are provided: Slot a(*1) and Slot b(*2). Slot a(*1) shows a slot with a width of 4.4 and a depth of 4. Slot b(*2) shows a slot with a width of 4.6 and a depth of 4.

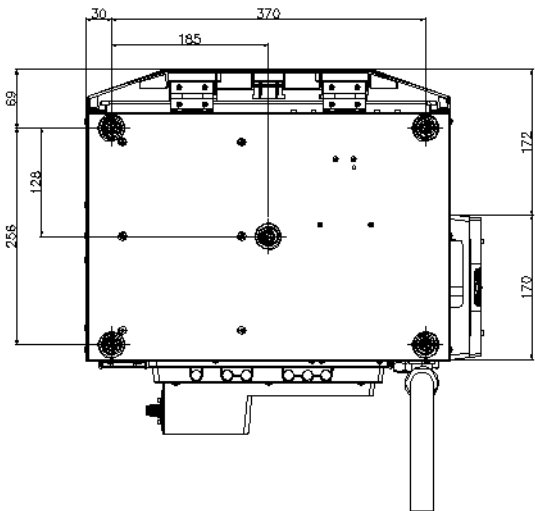
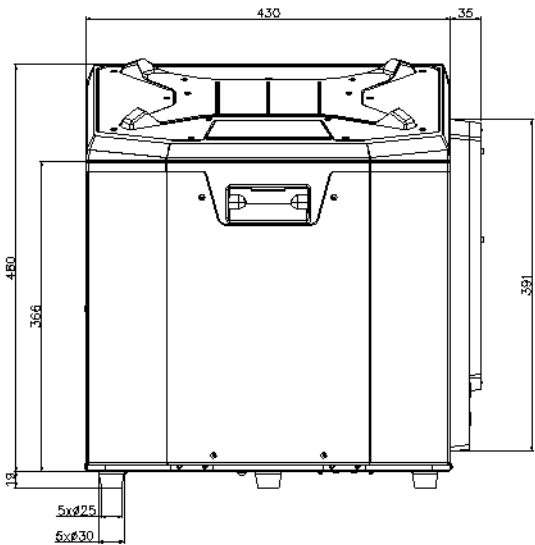
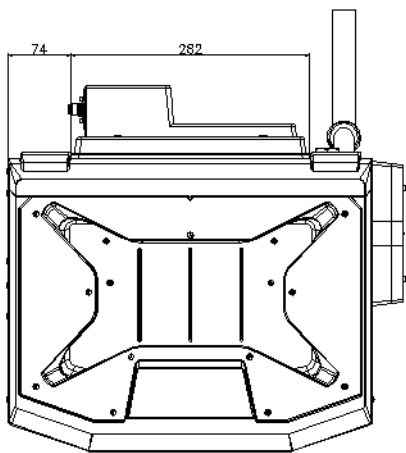
[illegible]

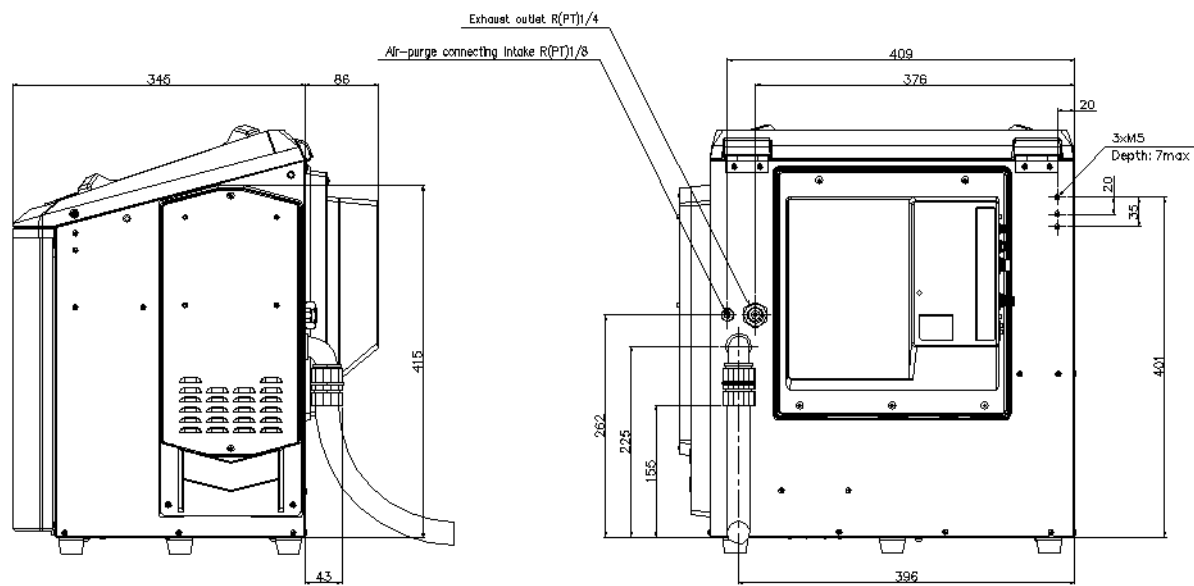
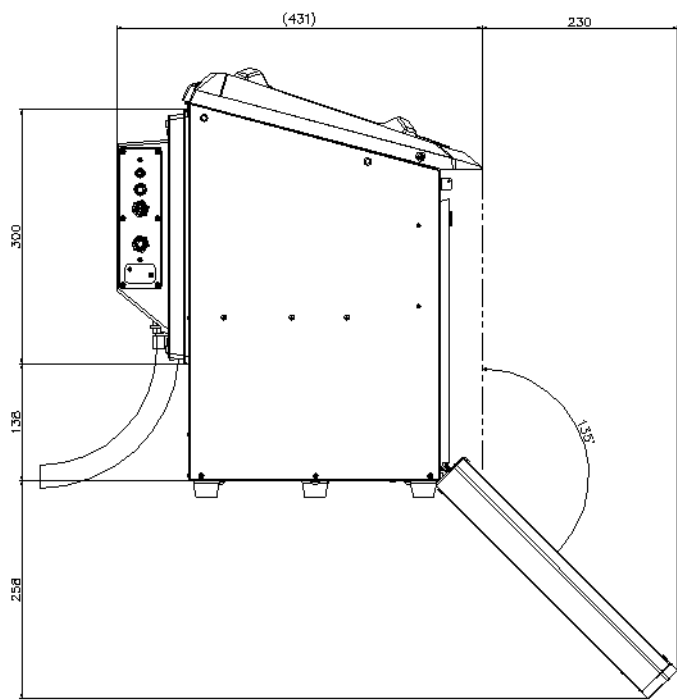
MK-G1000_Head





MK-G1000/QD1





C1

74 282

