



MK-G1000

Continuous Inkjet Printer Standard ink

CE

*Please note that accessories depicted in the image are for illustrative purposes only and may not be included with the product.

Specifications

Model	MK-G1000
Touch panel console	MK-P5
Character height	1 to 12 mm 0.04" to 0.47"
Maximum number of printable lines	6
Dot configuration (vertical)	5, 7, 9, 10, 12, 14, 16, 24, 32 dots
Font	Original, Serif, Sans Serif
Character types	Alphabetic characters, numbers, katakana, hiragana, symbols, kanji (JIS levels 1 and 2), Chinese (GB2312), Latin characters, logotypes, custom characters (fonts created by users)
Barcodes	CODE39, ITF, NW7 (Codabar), 2of5, CODE128, JAN/EAN/UPC, check digit addition function (except for 2of5)
2D codes	QR code models 1 and 2, Micro QR, DataMatrix (ECC200)
Head distance	15 mm 0.59" (24 dots or less), 20 mm 0.79" (25 dots or more), 35 mm 1.38"
Head direction	All directions
Positioning guide	Guide printing, guide beam emission
Maximum printing speed	2525 characters/sec *1
Print data registration	500 settings
Functions	Automatic calendar, expiration date, hold printing for desired time, automatic counter, 2- to 36-number system counter, automatic operation, character direction setting (90, 180, 270 degrees), double-width character, logo creation, font creation, character height and width adjustment, sensor pass filter, workpiece-stop alarm, input time constant setting, barcode comparison setting switch, automatic setting switch at print completion (group printing), terminal block monitor, communication buffer, error level change, CV-X link, IV2 link, MK link, smart startup/shutdown/recovery (when connected to MK Dock), smart program change, operation report (when connected to Operation Assist Camera), Event Recording (when connected to Operation Assist Camera), access rights configuration, Web Console *2, E-mail notifications, Customization functions
Maintenance functions	Automatic nozzle cleaning, ink draining, internal cleaning, jet operation (nozzle and gutter suction, intermittent spraying), error display, error history, maintenance history, internal path monitor, maintenance guidance, error clearing guidance, auto-shower, sleep mode (when connected to MK Dock), path recovery
Input (NPN/PNP)	Printing start, encoder (A, B), setting number selection, setting number switching, printing start disabling, printing stop, printing direction switching, counter/group reset, counter increase (startup), counter decrease (shut down), error clearing, head detection input, Event Recording input (when connected to Operation Assist Camera)
Output (NPN/PNP)	Error, caution, printing ready, setting switch ready, busy (printing), printing complete, counter complete (image capture trigger), service power supply (24 V)
Console display language	Japanese, English, Chinese, Thai, German, French, Italian, Spanish, Portuguese, Dutch, Polish, Czech, Hungarian, Slovenian
Interface	RS-232C, USB 2.0*3, Ethernet (100Base-TX/10Base-T)
Print head cable length	4 m 13.1'

Console cable length		
Operation Assist Camera cable length		2.8 m 9.2' *4
MK Dock cable length		4 m 13.1' *4
Ratings	Power voltage	Single-phase, 100 to 240 VAC ±10%, 50/60 Hz
	Power consumption	When stopped: 40 W / During printing: 60 W
Environmental resistance	Ambient temperature	0 to 45°C 32 to 113°F
	Ambient temperature for storage	-10 to +60°C 14 to 140°F (No freezing)
	Relative humidity	0 to 90% RH
Housing		Stainless steel
Enclosure rating		IP55 *5
Drop resistance		Compliant with MIL-STD-810G Change 1 Method 516.7 Procedure IV Transit Drop *6
Weight	Main unit	30.9 kg
	Console	1.7 kg (with jacket: 2.1 kg)
	Operation Assist Camera	0.25 kg *4
	MK Dock	MK-D1A: 1.0 kg, MK-D1B: 1.15 kg *4
Dimensions		465 × 388 × 499 mm 18.31" × 15.28" × 19.65" (W × D × H)

*1 With 5-dot character, 1-line printing with 1-dot character spacing.

*2 The Web Console can only be used in the following environments. Microsoft Internet Explorer 11, Microsoft Edge 84, Google Chrome 84, Mozilla Firefox 79, iOS/Safari 604, Android OS 9/Chrome 84.

*3 Usable size for USB memory devices: 65 × 25 × 18 mm 2.56" × 0.98" × 0.71" (W × D × H)

*4 Operation Assist Camera and MK Dock are optional accessories.

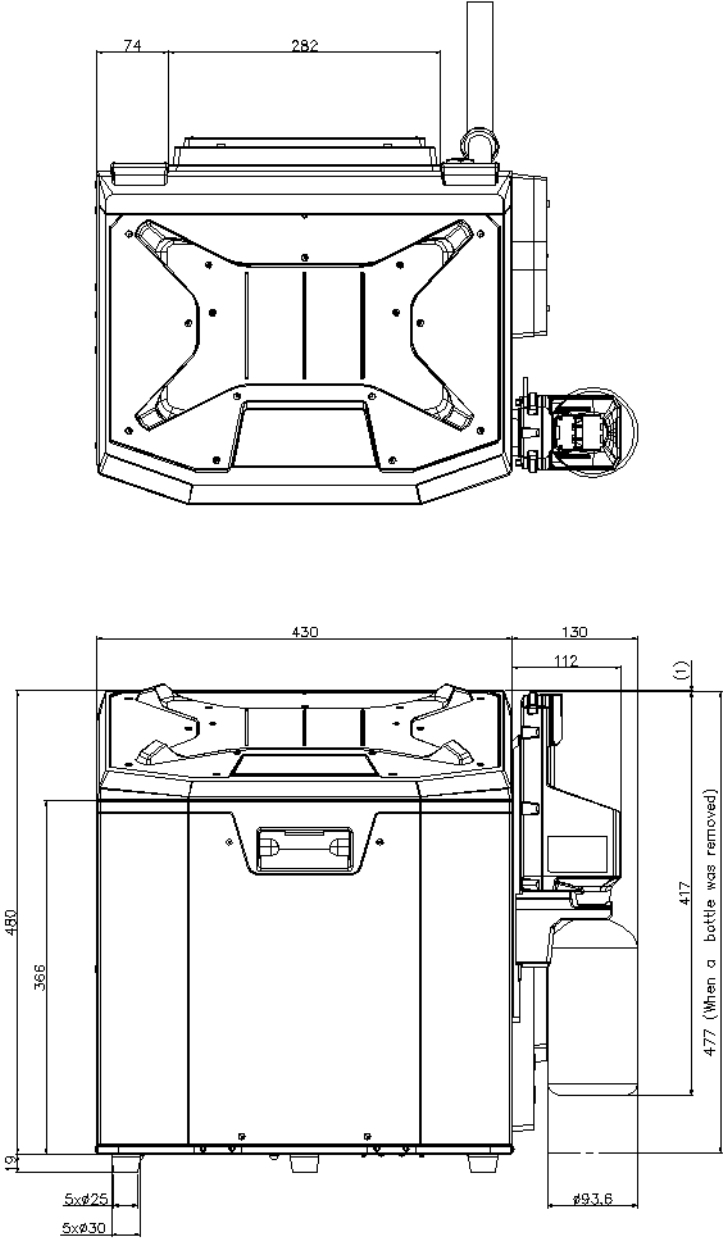
*5 The print head is IP55-rated when not ejecting ink. The console, Operation Assist Camera and the MK Dock (without waste ink bottle attached) are also IP55-rated.

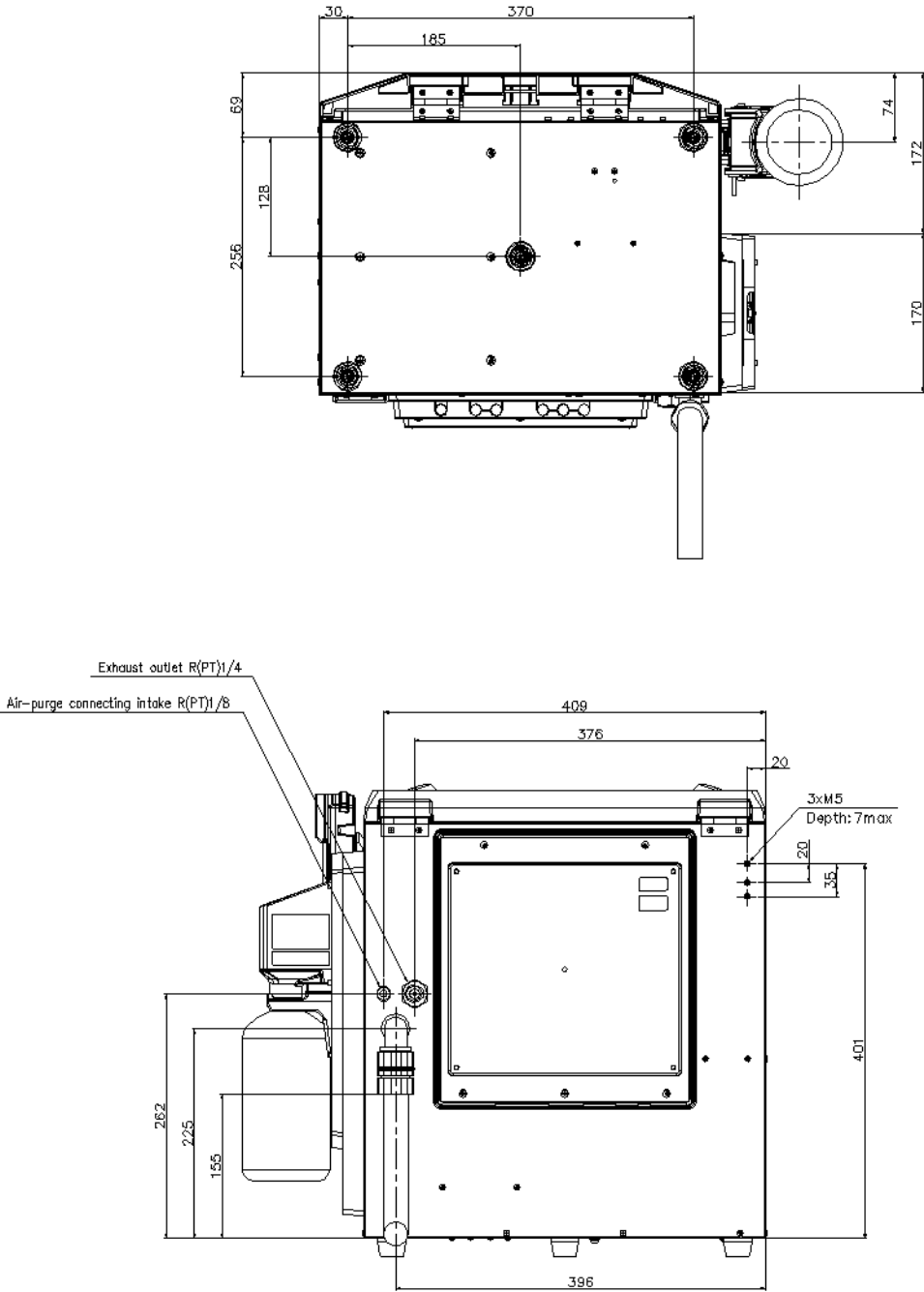
*6 Print head, console, and Operation Assist Camera only. When the print head and console are fitted with a jacket. The drop resistance does not guarantee against destruction or failure.

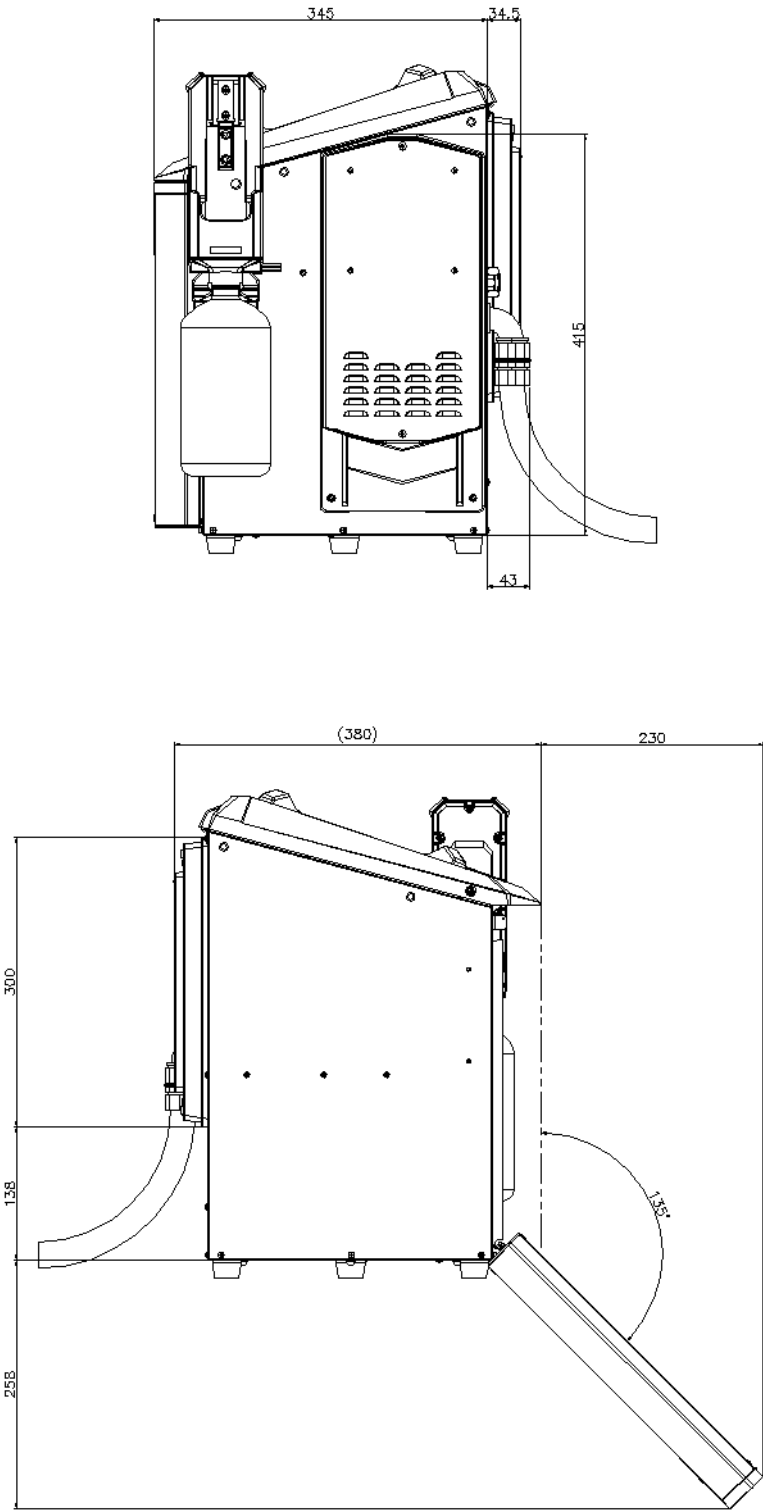
Dimensions

* Download CAD file or product manual for larger image/text and more detail.

MK-G1000/D1A

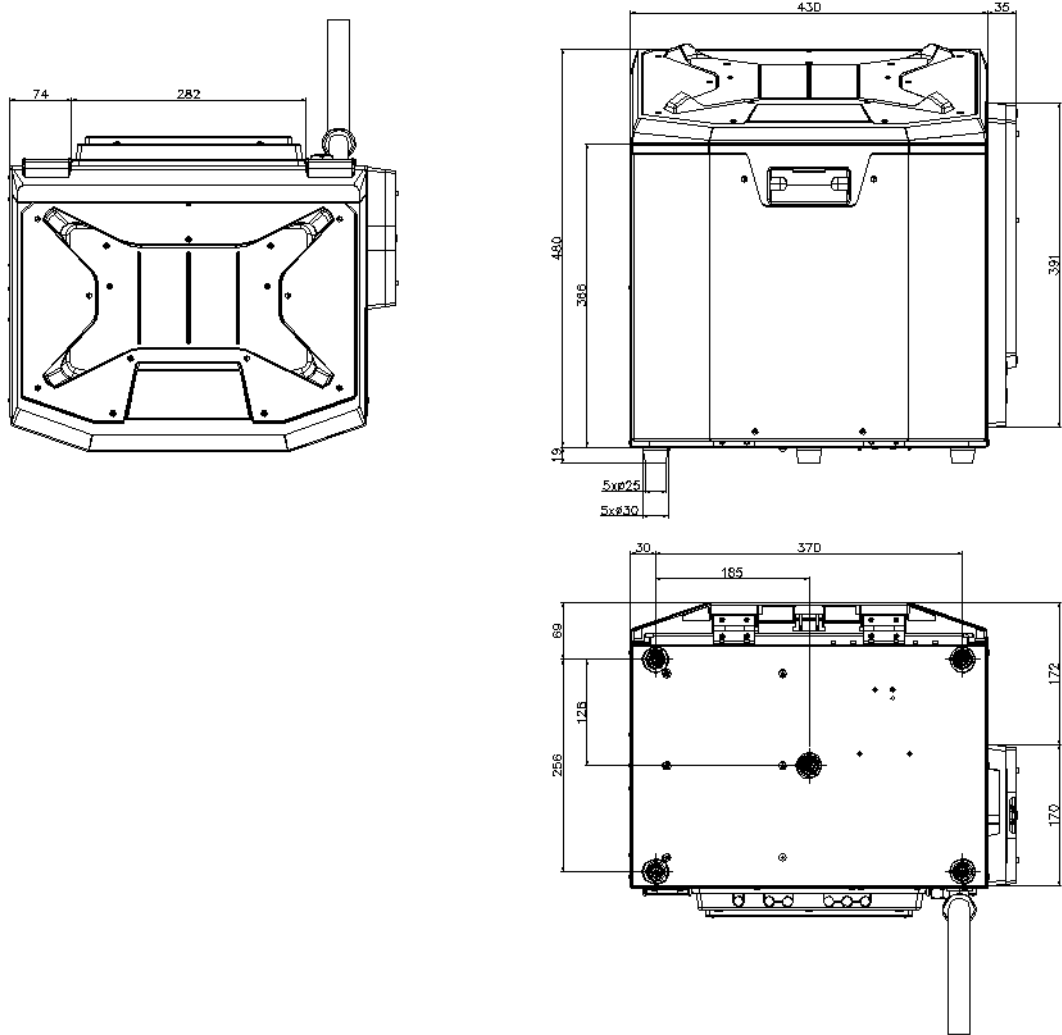


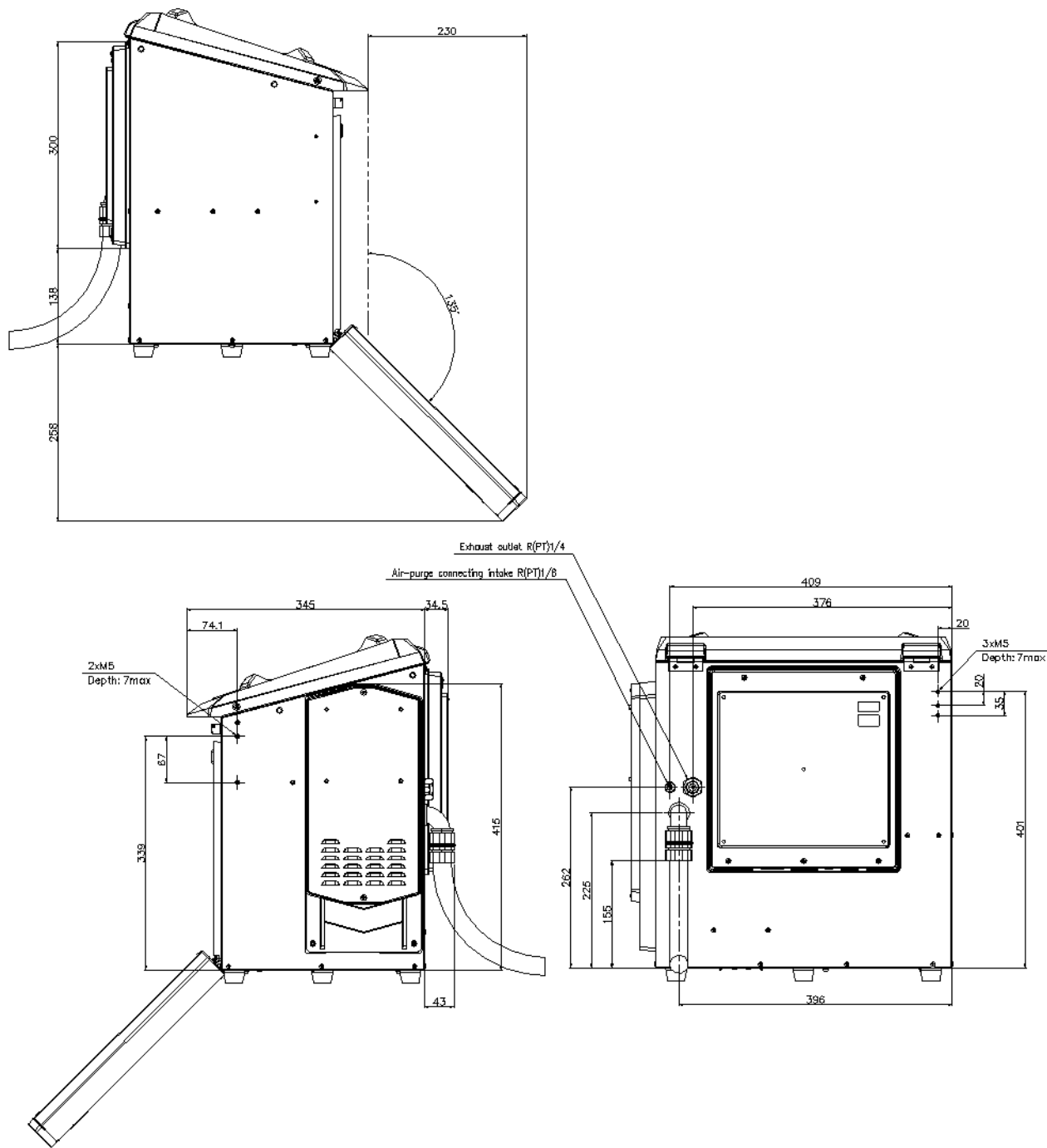




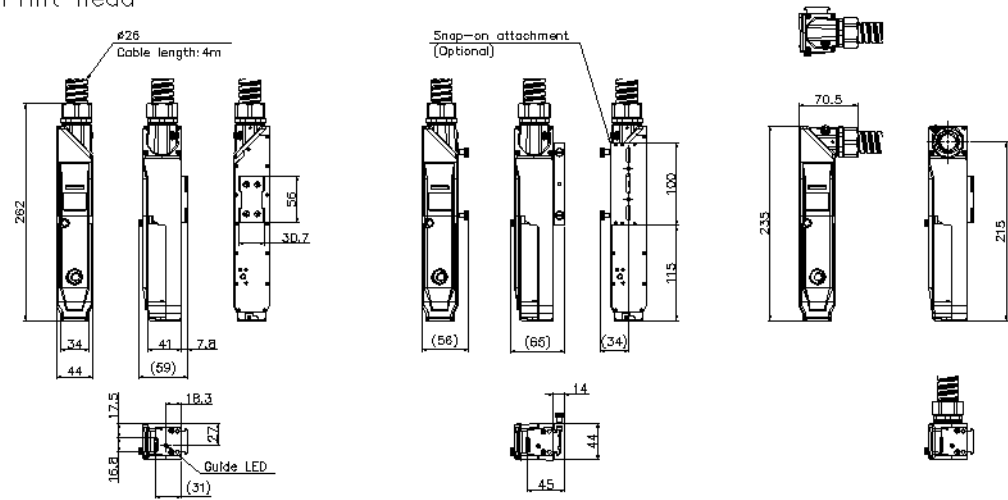
MK—G1000

Controller

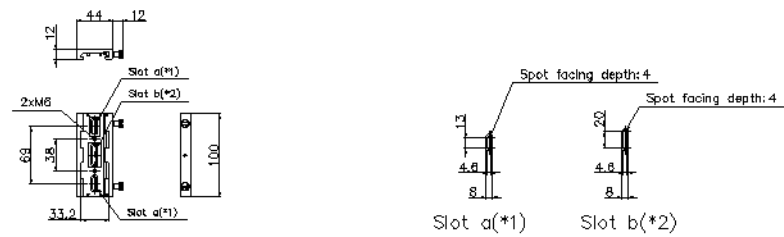




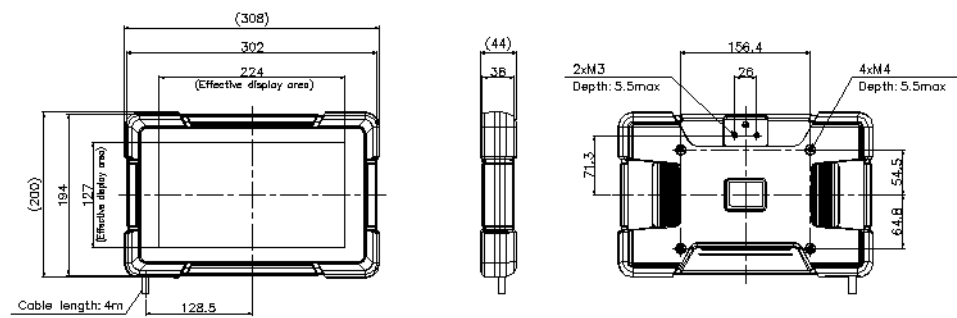
Print head

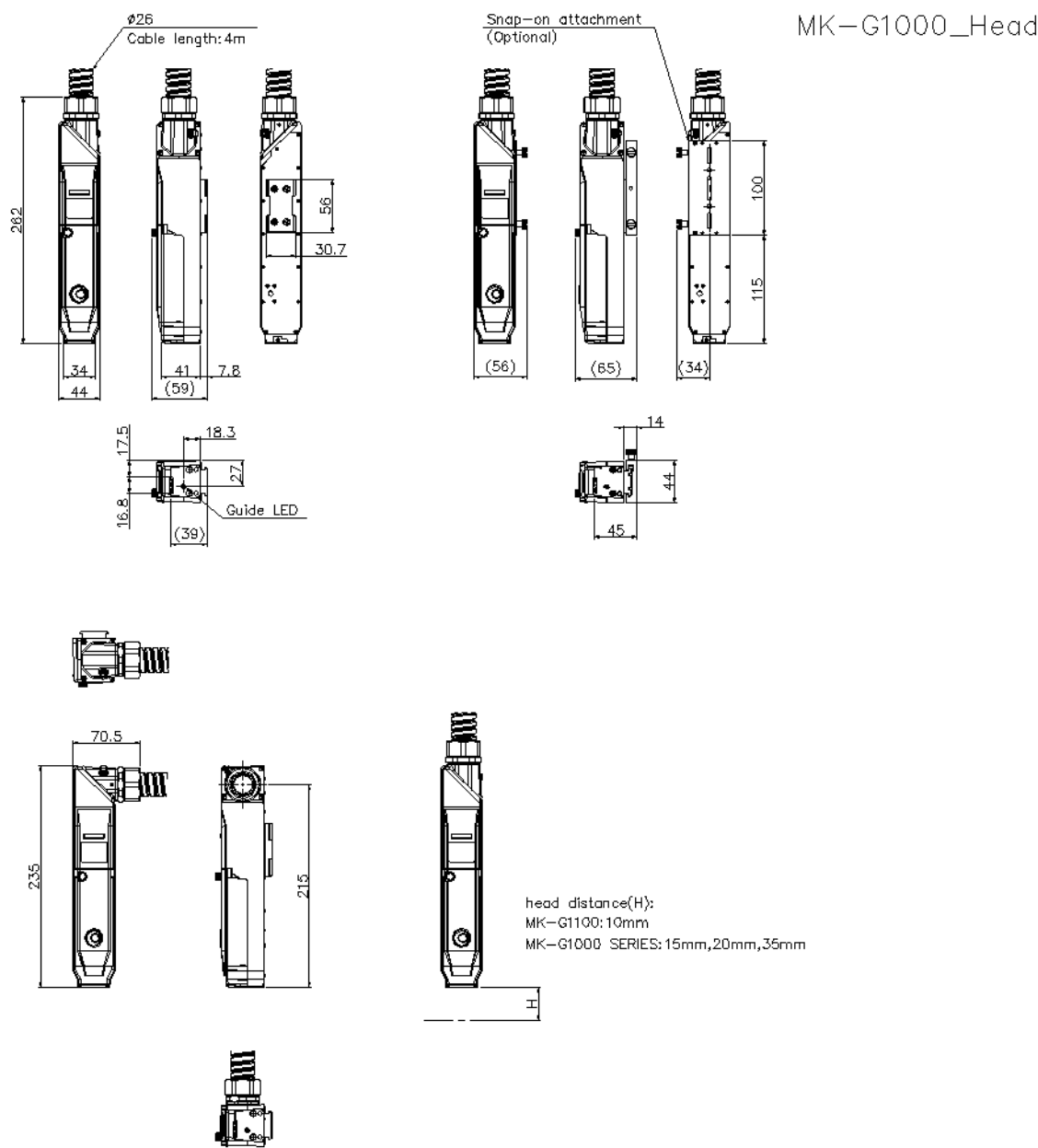


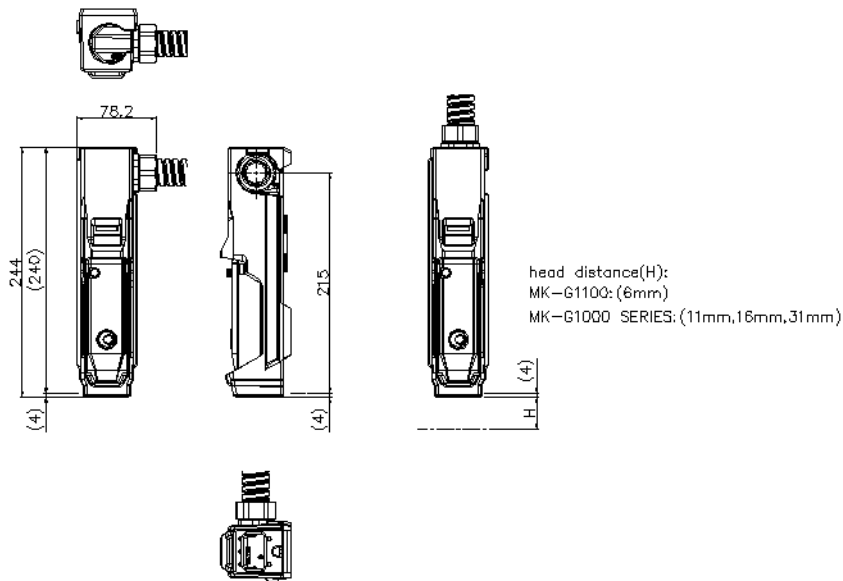
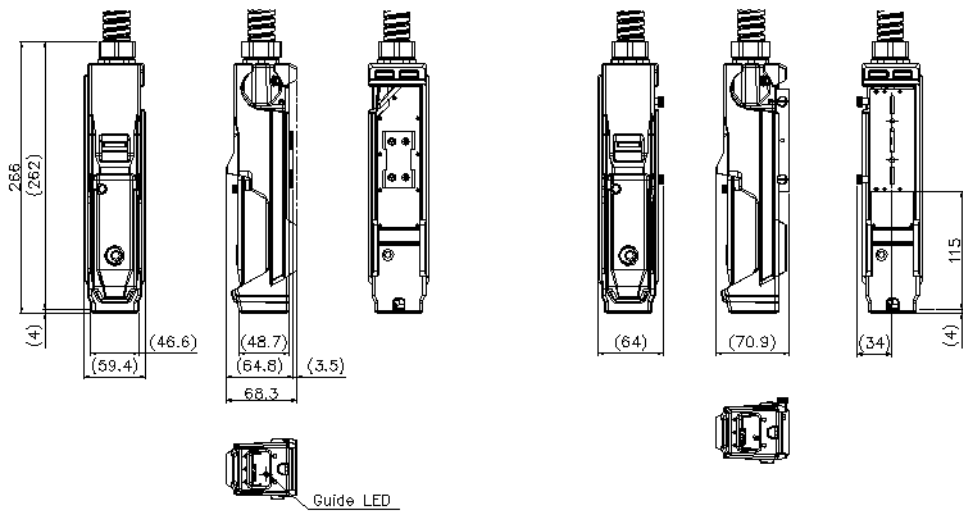
Snap-on attachment
(Optional)



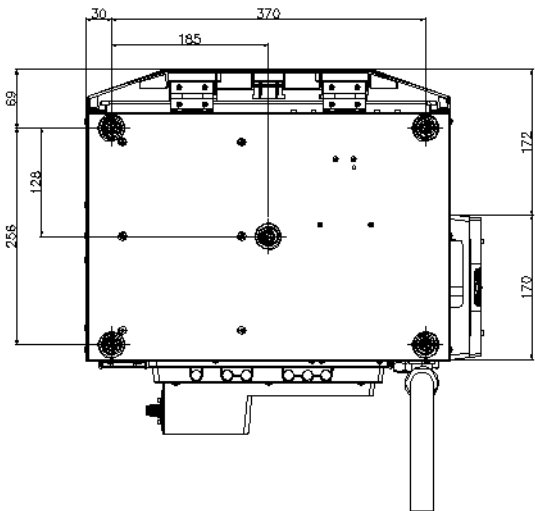
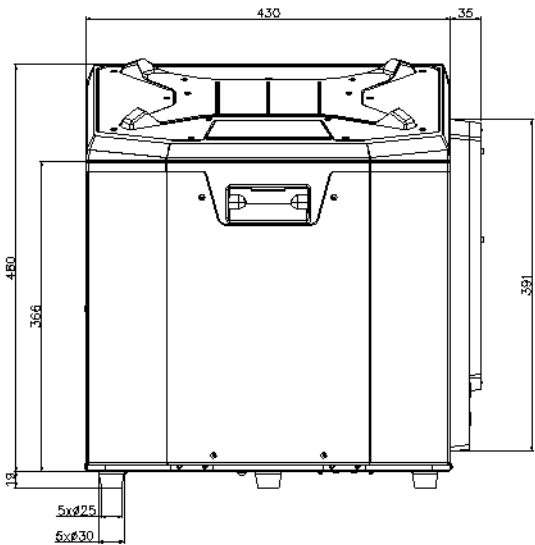
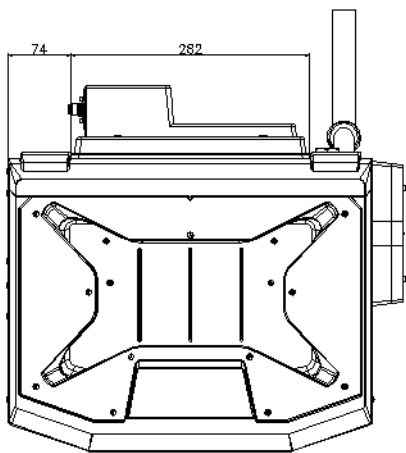
Console

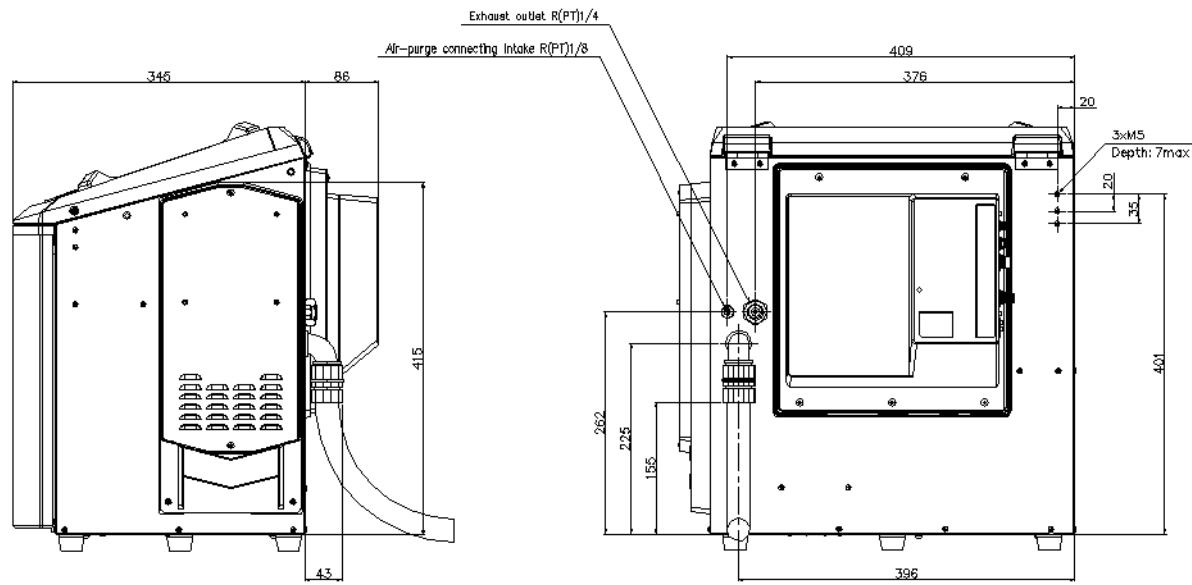
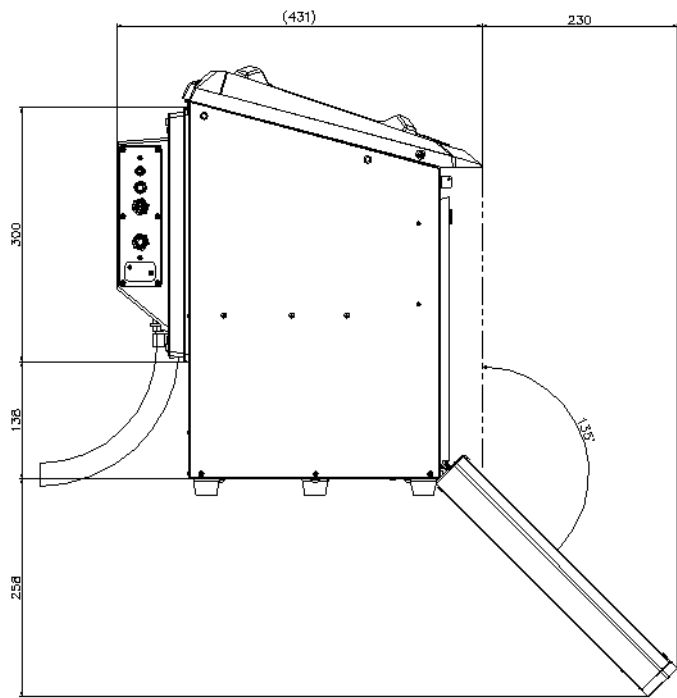






MK-G1000/QD1





Technical drawing of the C1 control unit. The drawing includes a front view with dimensions 74 and 282, and a side view showing a cable connector.

