



LZ-155

Sensor Head, Visible-light Type

*Please note that accessories depicted in the image are for illustrative purposes only and may not be included with the product.

This model has been discontinued.

Compliance with the certification standard is ensured as of the time of shipment from our company.

Contact Us: 1-888-539-3623

Recommended Replaceable Products: [Sensor head, Spot Reflective, Ultra-small beam spot - LV-NH37](#)

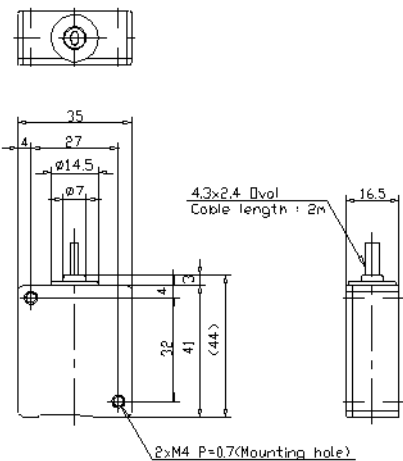
Specifications

Model		LZ-155
Type		Small spot reflective model sensor head
Detecting distance		Transmitter lens: Norbornene plasticReceiver lens cover: Polyarylate
Light source		40 to 60 mm 1.57" to 2.36" (spot diameter: 1 mm ϕ 0.04" or less)
Detectable object		Semiconductor laser, wavelength: 670 nm, 1.4 mW maximum, Class 2
Minimum detectable object		Transparent and opaque
Minimum beam spot diameter		Copper wire with a diameter of 0.01 mm
Repetition accuracy		0.05 mm
Sensitivity adjustment		0.005 mm 0.0002" (horizontal direction)
Response time		7-turn trimmer
Operation mode		1ms max.
Indicator lamp		Light-ON/Dark-ON (switchable by way of a switch)
Control output		Operation: red LED
Rating	Power voltage	NPN open-collector 100 mA max. (24 VDC max.), Residual voltage: 1 V max.
	Current consumption	12 to 24 VDC \pm 10 %, Ripple (P-P) 10 % or less
Environmental resistance	Ambient light	60 mA or less
	Ambient temperature	Fluorescent lamp: 3,000 lux or less, Sunlight: 5,000 lux or less
	Relative humidity	0 to +40 °C 32 to 104 °F
Material		35 to 85 % RH (No condensation)
Weight		Aluminum die-cast (Case)
		Approx. 70 g (including 2-m 6.6' cable)

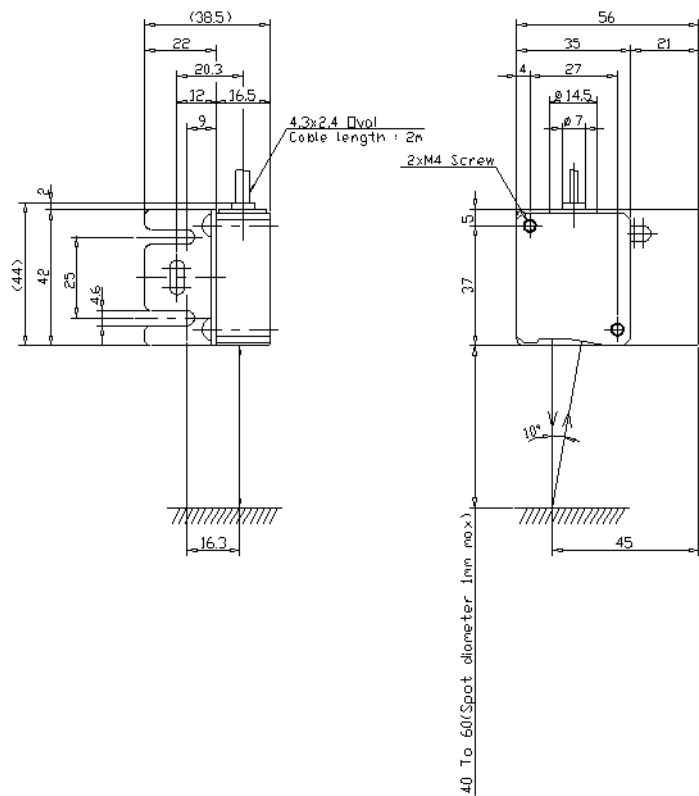
Dimensions

* Download CAD file or product manual for larger image/text and more detail.

LZ-155



When mounting bracket is attached



Mounting bracket

