




LZ-153

Sensor Head

*Please note that accessories depicted in the image are for illustrative purposes only and may not be included with the product.

 This model has been discontinued.
Compliance with the certification standard is ensured as of the time of shipment from our company.

Contact Us: 1-888-539-3623

Recommended Replaceable Products: [Sensor head, Spot Reflective, Ultra-small beam spot - LV-NH37](#)

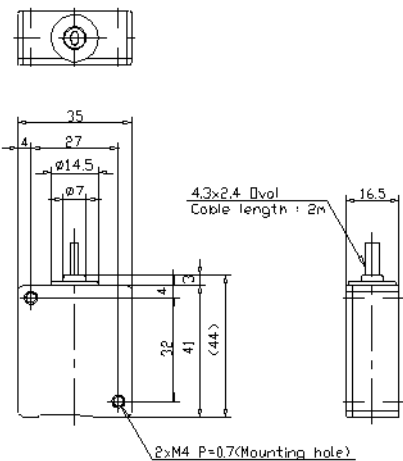
Specifications

Model		LZ-153
Detecting distanceTransmitter lens: Norbornene plasticReceiver lens cover: Polyarylate		40 to 60 mm 1.57" to 2.36" (spot diameter: 1 mm \varnothing 0.04" or less)
Light source		Semiconductor laser
Detectable object		Opaque material, translucent material, transparent material
Minimum detectable object		Copper wire with a diameter of 0.01 mm
Minimum beam spot diameter		0.05 mm
Repetition accuracy		\pm 0.02 mm 0.0008"
Laser output		0.18mW or less
Vertical hysteresis distance		15% of the detecting distance
Environmental resistance	Ambient light	Fluorescent lamp: 3,000 lux or less, Sunlight: 5,000 lux or less
	Ambient temperature	0 to +50 °C 32 to 122 °F
	Relative humidity	35 to 85 % RH
Material		Aluminum die-cast (Case)
Weight		Approx. 70 g (including 2-m 6.6' cable)

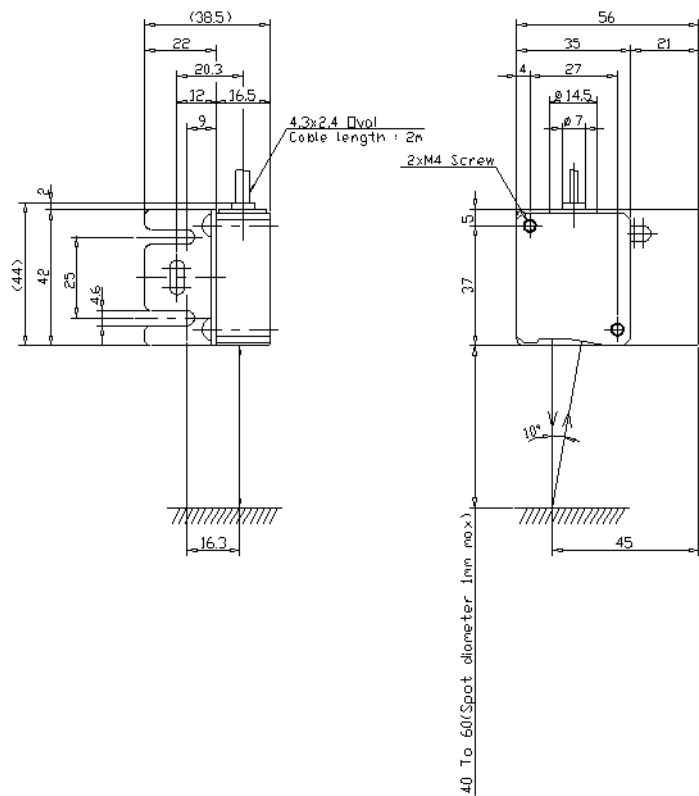
Dimensions

* Download CAD file or product manual for larger image/text and more detail.

LZ-155



When mounting bracket is attached



Mounting bracket

