




LV-H64

retro-reflective Sensor Head, Area Type, Long-distance Area



*Please note that accessories depicted in the image are for illustrative purposes only and may not be included with the product.

 This model has been discontinued.
Compliance with the certification standard is ensured as of the time of shipment from our company.

Contact Us: 1-888-539-3623

Recommended Replaceable Products: [Sensor head, Retro-reflective model, Area type Magnified beam, long-distance area - LV-NH64](#)

Specifications

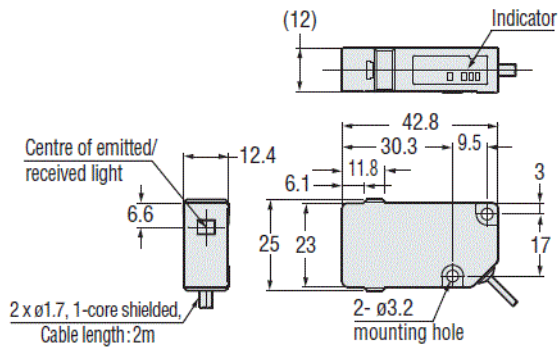
Model		LV-H64
Type		Long distance
FDA (CDRH) Part 1040.10		Class II
Light source		Visible red semiconductor laser
Wavelength		660 nm
Detecting distance	FINE	100 to 500 mm 3.94" to 19.69" (100 to 700 mm 3.94" to 27.56")*1
	TURBO	200 to 850 mm (300 to 1000 mm) 7.87" to 33.46" (11.81" to 39.37")*1
	SUPER	400 to 1200 mm (600 to 1500 mm) 15.75" to 47.24" (23.62" to 59.06")*1
Environmental resistance	Ambient temperature	-10 to +55 °C 14 to 131 °F (No freezing)
Material	Case	Reinforced glass/plastic
	Lens cover	Norbornene plastic
	Reflective mirror	Polycarbonate, acrylic
Weight		Approx. 45 g

*1 The parentheses indicate the detecting distance when OP-51428 is used.

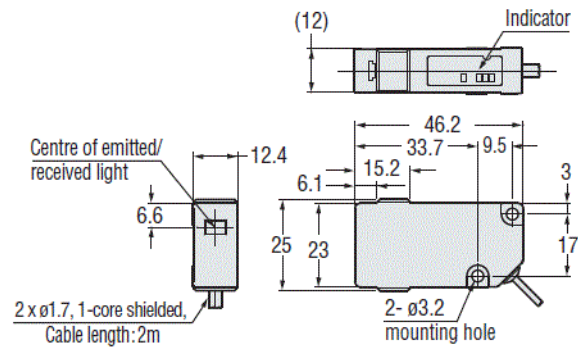
Dimensions

* Download CAD file or product manual for larger image/text and more detail.

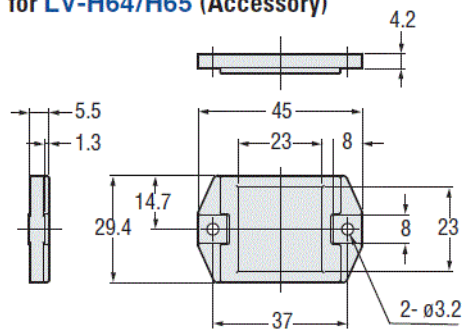
LV-H64



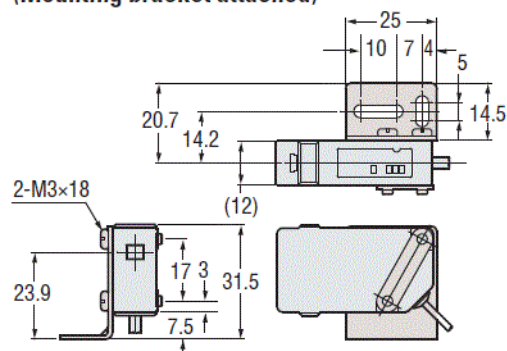
LV-H65



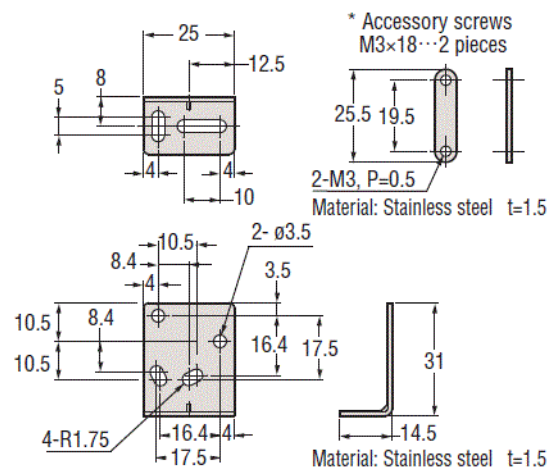
Reflector OP-51430 (R-6 grey) for LV-H64/H65 (Accessory)



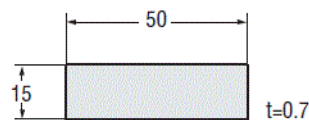
LV-H64/H65 (Mounting bracket attached)



Mounting bracket for LV-H64/H65 (Accessory)



Optional reflective tape OP-51428



Characteristic

* Download CAD file or product manual for larger image/text and more detail.

Detection distance – area width characteristics (typical example)

