


LV-H110

Transmissive Sensor Head, Area Type, High-power, 10-mm Wide



*Please note that accessories depicted in the image are for illustrative purposes only and may not be included with the product.

 This model has been discontinued.
Compliance with the certification standard is ensured as of the time of shipment from our company.

Contact Us: 1-888-539-3623

Recommended Replaceable Products: [Sensor head, Area Thrubeam, High power - LV-NH110](#)

Specifications

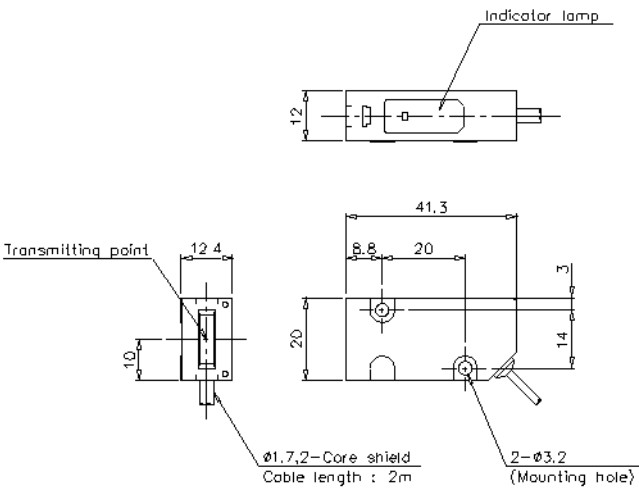
Model		LV-H110
Type		Area thrubeam , High power
FDA (CDRH) Part 1040.10		Class II
Light source		Visible red semiconductor laser
Output		3.0 mW (FDA), 1.0 mW (IEC)
Wavelength		660 nm
Laser Class	IEC 60825-1	Class II
Detecting area		10 mm 0.39"
Detecting distance		2000 mm 78.74"
Pulse duration		3.5 μs
Environmental resistance	Ambient temperature	-10 to +55 °C 14 to 131 °F (No freezing)
	Relative humidity	35 to 85 % RH (No condensation)
Material	Case	Glass reinforced plastic
	Lens cover	Transmitter: Glass Receiver: Polyarylate
Weight		Approx. 80 g

Dimensions

* Download CAD file or product manual for larger image/text and more detail.

LV-H100

LV-H100T



LV-H100R

