



LV-52P
Amplifier Unit, Expansion Unit, PNP



*Please note that accessories depicted in the image are for illustrative purposes only and may not be included with the product.

This model has been discontinued.
Compliance with the certification standard is ensured as of the time of shipment from our company.

Contact Us: 1-888-539-3623

Recommended Replaceable Products: [Multi-Purpose Digital Laser Sensor - LV-N series](#)

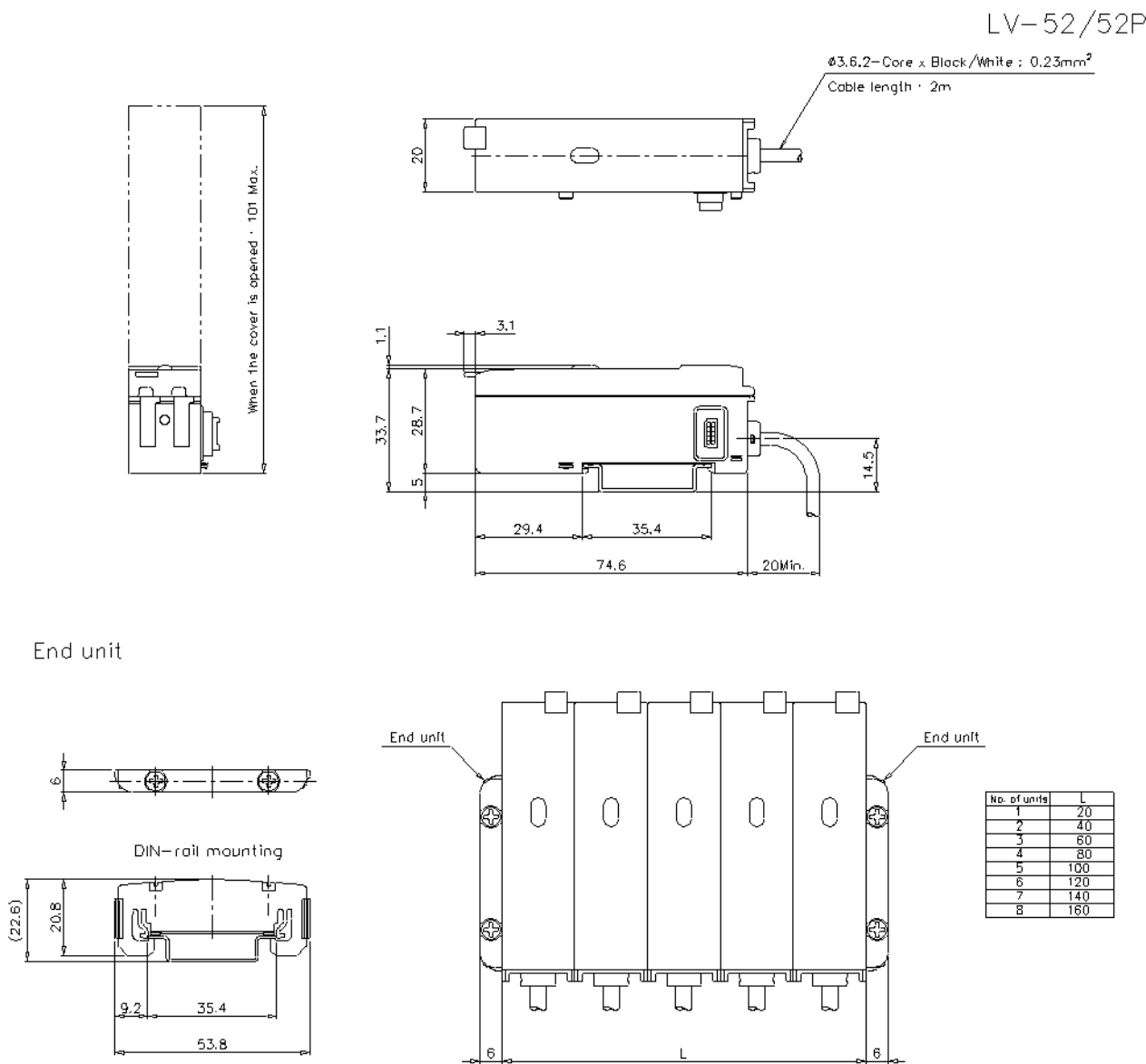
Specifications

Model		LV-52P
Type		PNP output
Main unit/expansion unit		Expansion unit (1 line)
Control output		PNP open-collector x 2 channels, 30 VDC max., 100 mA, max. residual voltage (1.0 V max.)
Response speed		FINE : 80 μs , TURBO : 500 μs , SUPER : 4 ms
Number of interference preventive units		FINE : No device (0) , TURBO : 2 units , SUPER : 4 units*1
Detection mode		Light intensity distinction / edge detection
Protection circuit		Reversed polarity protection, over-current protection, surge absorber
Unit expansion		Up to 7 additional expansion units can be installed (8 units including the main unit),
Rating	Power voltage	12 to 24 VDC, Ripple (P-P) 10 % or less (For the LV-20A/22A/22AP, the power supply voltage is supplied from the main unit.)
	Power consumption	1.5 W max. (125 mA max. for 12 V, 62.5 mA max. for 24 V)
Environmental resistance	Ambient temperature	-10 to +55 °C 14 to 131 °F (No freezing) *2
	Relative humidity	35 to 85 % RH (No condensation)
Material	Main unit	Polycarbonate
	Case	
Weight		Approx. 75 g

*1 To connect several units they must be mounted on a METAL DIN rail. Ensure that the output current is 20 mA max. With several units connected, the allowable ambient temperature range varies as follows :
When 2 to 5 expansion units are additionally installed : -10 to +50°C (14 to 122°F).
When 6 or 7 expansion units are additionally installed : -10 to +45°C (14 to 113°F).
*2 When several units are connected, the ambient temperature requirement varies depending on the total number of units connected.
When 2 to 5 units: -10 to +50 °C **14 to 122 °F**
When 6 to 7 units: -10 to +45 °C **14 to 113 °F**
When connecting several units, be sure to mount the units to a metallic DIN rail. Make sure that the output current does not exceed 20 mA.

Dimensions

* Download CAD file or product manual for larger image/text and more detail.



I/O Circuit Connection diagram

* Download CAD file or product manual for larger image/text and more detail.

PNP

