



FU-E11

Transmissive Fiber Unit, Area Type, 11-mm Wide

*Please note that accessories depicted in the image are for illustrative purposes only and may not be included with the product.

Specifications

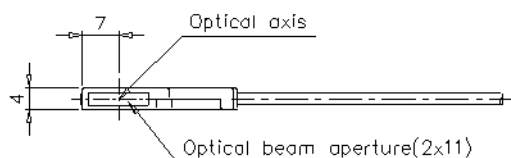
Model		FU-E11
Type		Area thrubeam
No. of beam axes		11 × 2 mm0.433" × 0.079", 11 × 1 mm0.433" × 0.039" (when the 1.0 mm0.039" slit is attached), 11 × 0.5 mm0.433" × 0.02" (when the 0.5 mm0.02" slit is attached)
Fibre unit length		2 m78.74" free-cut
Fibre unit diameter		ø2.2
Minimum bend radius		R2 mm0.079"
Minimum detectable object		Opaque material with a diameter of 0.2 mm0.008"*1
Tightening torque		0.15 Nm
Environmental resistance	Ambient temperature	-40 to +50 °C -40 to 122 °F (No freezing)
	Relative humidity	35 to 85 % RH (No condensation)
Material		Main unit case : polybutylene terephthalate, screw mounting seat : SUS304, lens : norbornene plastic, core fiber : acrylic, fiber sheath : polyethylene
Accessories		Mounting screws (M2 × 6), nuts (M2, t = 1.2), fiber cutter, slit (0.5 mm or 1.0 mm width)
Weight		Approx. 20 g

*1 The minimum detectable object is the value when the detecting distance and sensitivity have been set to their optimal state.

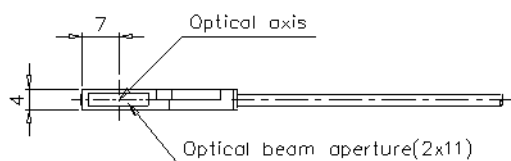
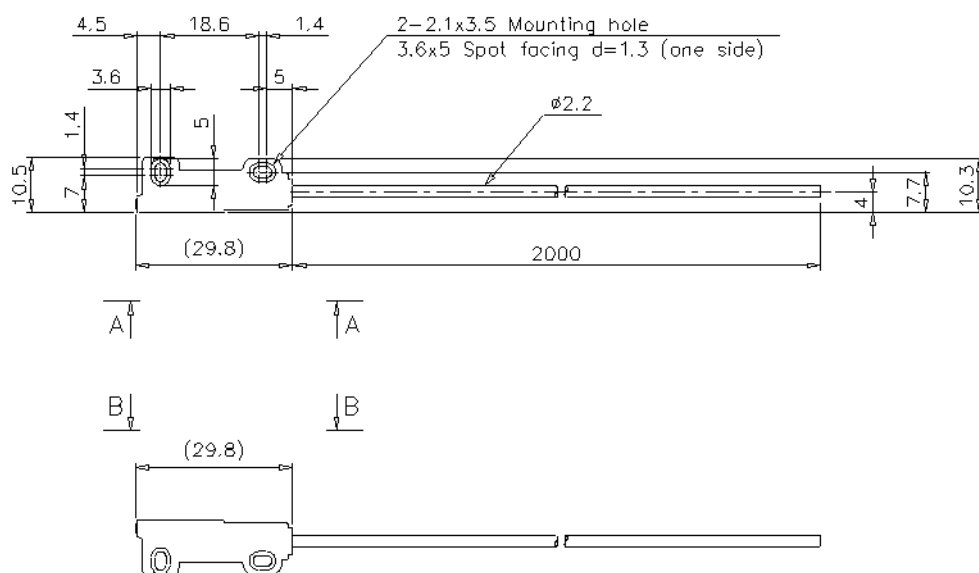
Dimensions

* Download CAD file or product manual for larger image/text and more detail.

FU-E11



View A-A



View B-B

*Supplied screw : M2xL6 (4pcs.)
 nut : M2, t=1.2 (4pcs.)
 slit : 0.5mm/1mm (2sets.)