



# FU-16

Fiber Unit Thrubeam type

\*Please note that accessories depicted in the image are for illustrative purposes only and may not be included with the product.

## Specifications

|                                                           |                     |                                          |
|-----------------------------------------------------------|---------------------|------------------------------------------|
| Model                                                     |                     | FU-16*1                                  |
| Optical axis diameter<br>(Standard target to be detected) |                     | ø2.5 mm0.098"                            |
| Beam emitting direction                                   |                     | Side                                     |
| Aperture angle                                            |                     | Approx 6°                                |
| Fibre unit length                                         |                     | 2 m78.74" free-cut                       |
| Fibre unit diameter                                       |                     | ø1.0                                     |
| Minimum bend radius                                       |                     | R10 mm0.394"                             |
| Minimum detectable object                                 |                     | Object with a diameter of 0.1 mm0.004""2 |
| Environmental resistance                                  | Ambient temperature | -40 to +70 °C -40 to 158 °F              |
| Weight                                                    |                     | Approx. 8 g                              |

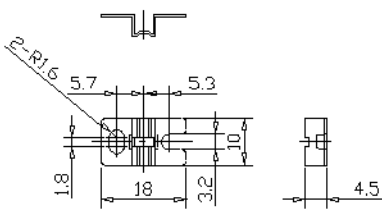
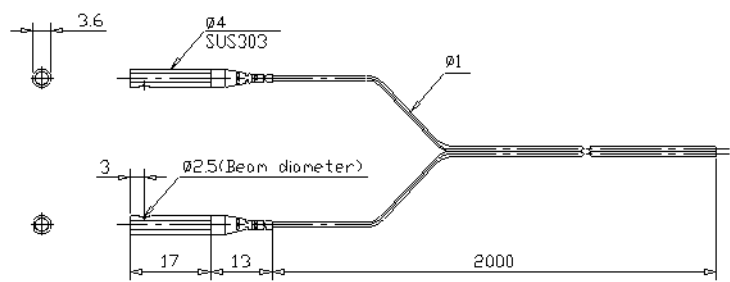
\*1 For details on the detecting distance, see the fiber amplifier catalog.  
\*2 The minimum detectable object is the value when the detecting distance and sensitivity have been set to their optimal state.

# Dimensions

\* Download CAD file or product manual for larger image/text and more detail.

FU-16

Mounting bracket



t=0.5,SUS304