



FS-V21RM  
Fiber Amplifier, Cable Type, Main Unit, NPN



\*Please note that accessories depicted in the image are for illustrative purposes only and may not be included with the product.

 This model has been discontinued.  
Compliance with the certification standard is ensured as of the time of shipment from our company.

Contact Us: 1-888-539-3623

Recommended Replaceable Products: [Digital Fiber Optic Sensor - FS-N40 series](#)

Specifications

Model			FS-V21RM
Type			Main unit: 0-line
Light source LED			Red LED
Response time			250 μs (FINE) /500 μs (TURBO) /1 ms (SUPER TURBO) /4 ms (ULTRA TURBO) /500 μs (HIGH RESOLUTION) /50 μs (HIGH SPEED)
Output selection			Light-ON/Dark-ON selectable
Detection mode			Light intensity/rising edge/falling edge
Shift function			Max. ±1,999 (variable)
Timer function	Mode		Timer OFF/OFF-delay timer/ON-delay timer/One-shot timer, selectable
	Variable range		1 to 500 ms [1 to 30 ms (in 1 ms increments), 30 to 50 ms (in 2 ms increments), 50 to 200 ms (in 10 ms increments), 200 to 500 ms (in 50 ms increments)]
	Accuracy		±10 % of the Preset Value
Control output			100 mA max. (40VDC max), Residual voltage: 1Vmax.
Monitor output			1 to 5 load resistance to display 0 - 495 for FINE and TURBO. Voltage output: 1 to 5 V, Load resistance: 10 kΩ min., Repeatability: ±0.5 % of F.S.*1
Rating	Power voltage		12 to 24 VDC ±10 %, Ripple (P-P) 10 % or less
	Power consumption	Normal	S-APC OFF: 650 mW max.(27 mA max. at 24 VDC), S-APC ON: 720 mW max. (30 mA max. at 24 VDC)*2
		ECO half	S-APC OFF: 530 mW max.(22 mA max. at 24 VDC), S-APC ON: 660 mW max. (25 mA max. at 24 VDC)*2
		ECO all	S-APC OFF: 480 mW max.(20 mA max. at 24 VDC), S-APC ON: 550 mW max. (23 mA max. at 24 VDC)*2
Environmental resistance	Ambient light		Incandescent lamp: 20,000 lux max., Sunlight: 30,000 lux max.
	Ambient temperature		-10 to +55 °C 14 to 131 °F (No freezing)*3
	Relative humidity		35 to 85 % RH (No condensation)
	Vibration resistance		10 to 55 Hz, Double amplitude 1.5 mm 0.06", 2 hours in each of the X, Y, and Z directions
	Shock resistance		500 m/s², 3 times in each of the X, Y, and Z directions
Case material			Polycarbonate
Size			30 mm (H) x 9 mm (W) x 70 mm (D) 1.18" (H) x 0.35" (W) x 2.76" (D)
Weight			Approx. 80 g (including 2-m cable)

\*1 Use the FS-V21RM in the FINE or TURBO mode when outputting signals with a monitor.

\*2 S-APC will be always turned ON when the high-resolution or high-speed mode is selected. S-APC is by default set to OFF in any other mode.

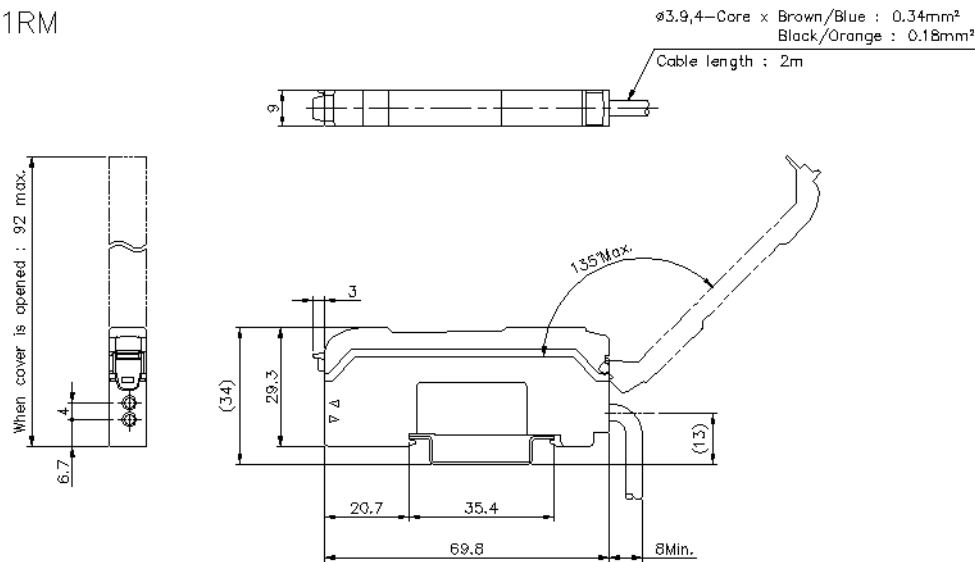
\*3 If more than one unit is used together, the ambient temperature varies with the conditions below. Mount the units on the DIN rail with mounting brackets and check that the output current is 20 mA or less.

3 to 10 Units: -10 to +50 °C 14 to 122 °F) 11 to 16 Units: -10 to +45 °C 14 to 113 °F

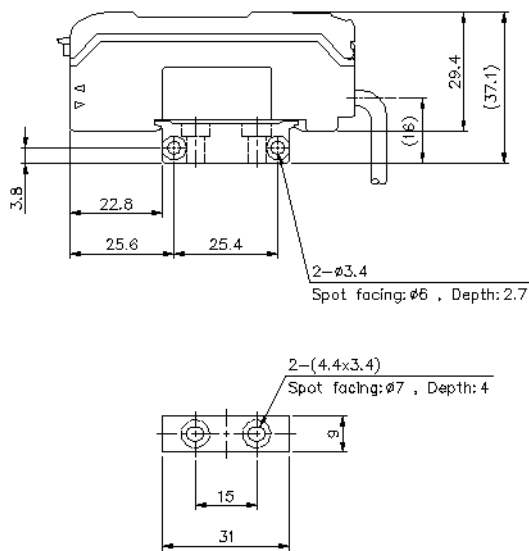
Dimensions

\* Download CAD file or product manual for larger image/text and more detail.

FS-V21RM



When mounting bracket is attached  
(Included in FS-V21RM)



# I/O Circuit Connection diagram

\* Download CAD file or product manual for larger image/text and more detail.

## I/O Circuit

