

# FS-R3

## Terminal Block Unit

\*Please note that accessories depicted in the image are for illustrative purposes only and may not be included with the product.

!

This model has been discontinued.

Compliance with the certification standard is ensured as of the time of shipment from our company.

Contact Us: 1-888-539-3623

## Specifications

Model		FS-R3
Response time		350 $\mu$ s to 1 ms *1
Indicator lamp		Red LED
Timer function		
Number of inputs		2
Input signal		NPN/PNP non-voltage input (contact,solid-state) switching
Output mode		N.O./N.C. (selectable)
Rating	Power voltage	12 to 24 VDC $\pm$ 5 %, Ripple (P-P) 5 % or less*2
	Current consumption	50 mA or less, plus current consumed by connected sensor (100 mA or less)
Environmental resistance	Ambient temperature	-10 to +50 $^{\circ}$ C 14 to 122 $^{\circ}$ F (No freezing)*3
	Relative humidity	35 to 85 % RH (No condensation)
	Vibration resistance	10 to 55 Hz, Double amplitude 1.5 mm 0.06", 2 hours in each of the X, Y, and Z directions
	Shock resistance	500 m/s <sup>2</sup> , 3 times in each of the X, Y, and Z directions
Case material		Polycarbonate
Weight		Approx. 30 g

\*1 The response speed varies depending on the number of expansion units connected.

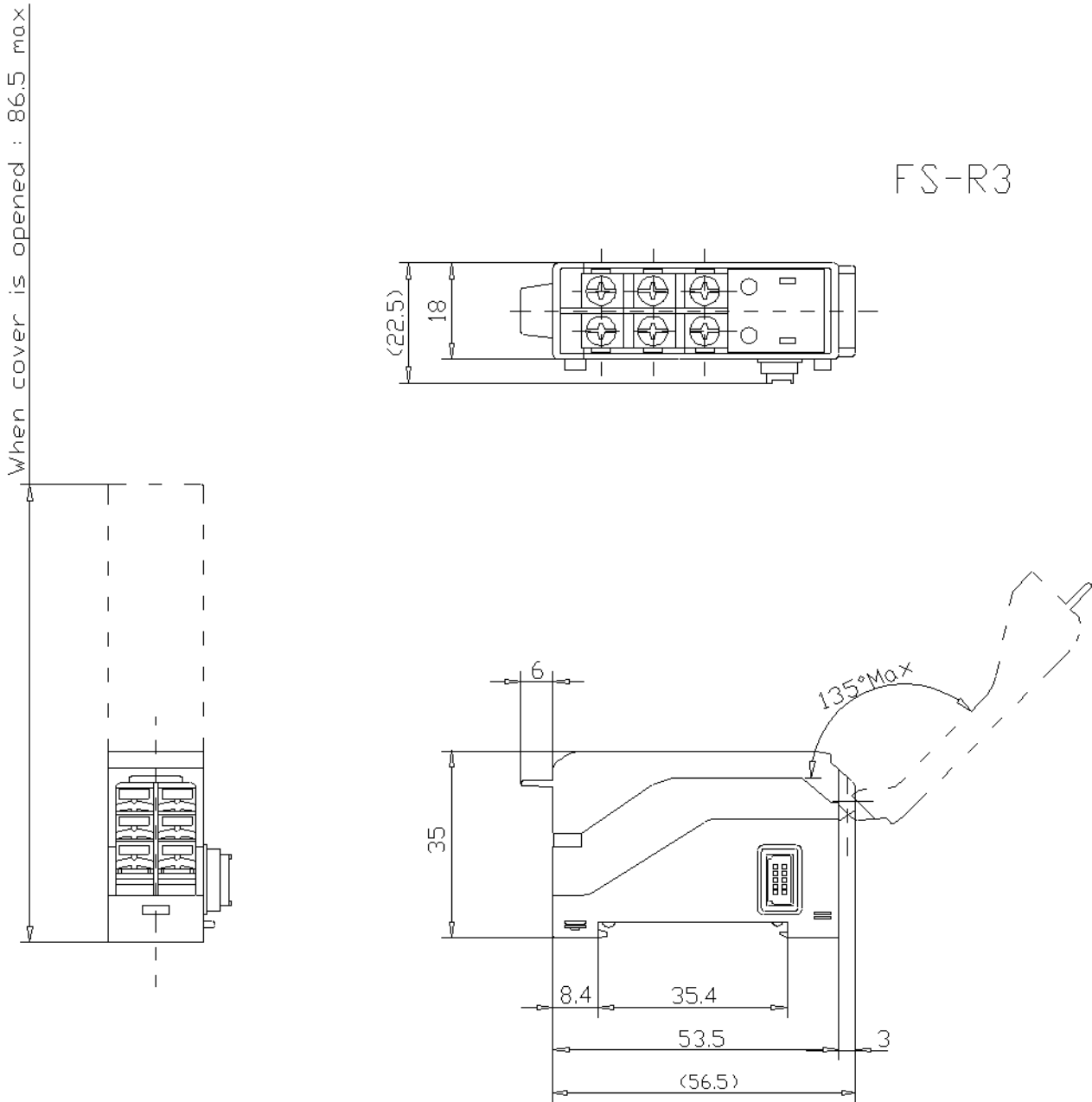
\*2 Change the supply voltage to meet the requirement of the input device (PLC, etc.).

\*3 If more than one unit is used together, the ambient temperature varies with the conditions below. Mount the units on the DIN rail with mounting brackets and check that the output current is 20 mA or less.

1 to 5 Units: -10 to +50  $^{\circ}$ C 14 to 122  $^{\circ}$ F, 6 to 8 Units: -10 to +45  $^{\circ}$ C 14 to 113  $^{\circ}$ F.

Dimensions

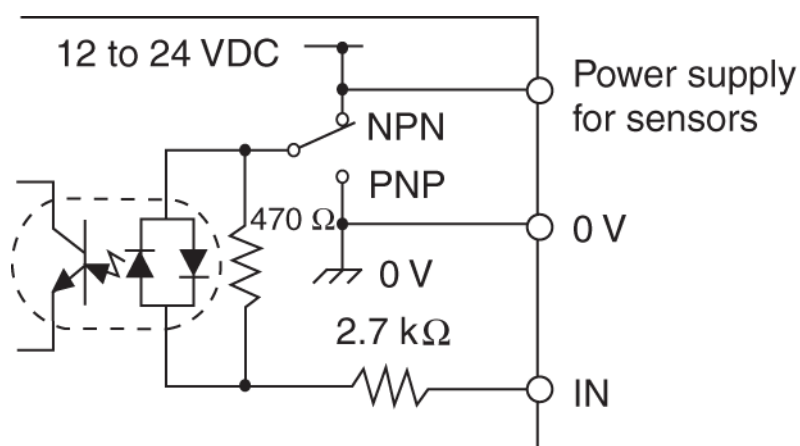
\* Download CAD file or product manual for larger image/text and more detail.



## I/O Circuit Connection diagram

\* Download CAD file or product manual for larger image/text and more detail.

### NPN/PNP



Power is supplied through the FS-R0.