



FD-GU1
AC power unit



*Please note that accessories depicted in the image are for illustrative purposes only and may not be included with the product.

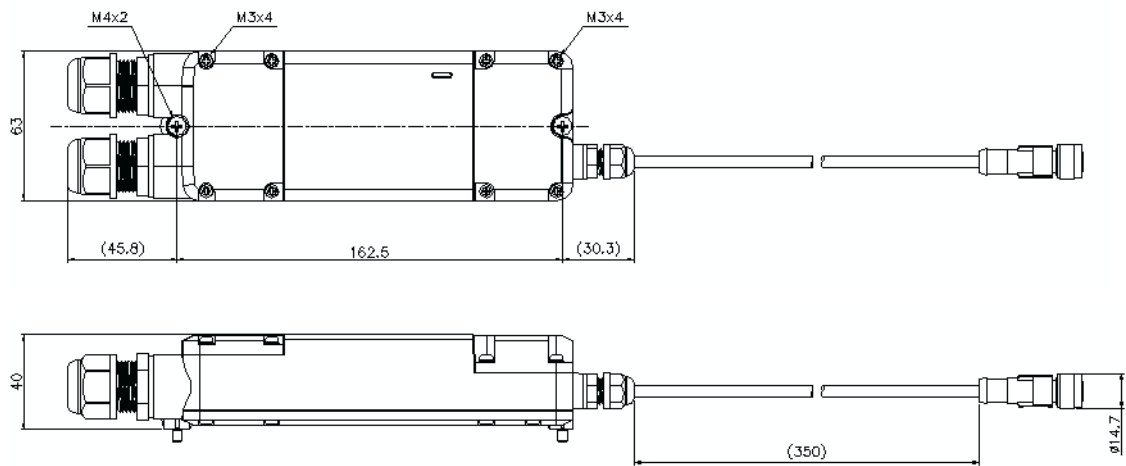
Specifications

Model		FD-GU1
System		Switching type
Input supply voltage		100 to 240 VAC; +10%/–15% (50/60 Hz)
Output voltage		24 VDC ±5%
Overvoltage category		II
Ripple noise		260 mV (p-p) or lower
Output capacity		9.1 W (0.38 A) (Class 2)
Power consumption		100 VAC: 0.3 A or lower; 200 VAC: 0.2 A or lower
Pollution degree		2
Withstand voltage		3000 VAC, 1 minute (between input and output, between all external terminals and case)
Momentary interruption		20 ms or lower
Wiring specifications		AC input: power supply M4 terminal block, 2 poles; Analog output: M3 terminal block, 2 poles; DC output: M12 4-pin connector
Protection circuit		Protection against power supply surge, protection against output short-circuiting
Main unit size		63 2.48" × 240 9.45" × 40 1.57" mm
Environmental resistance	Enclosure rating	IP65/67 (IEC60529)
	Ambient temperature	–20 to +50°C –4 to 122°F (no freezing)
	Relative humidity	5 to 90%RH (no condensation)
	Vibration resistance	10 to 500 Hz power spectral density: 0.816 G2/Hz in X, Y, Z axis directions
	Shock resistance	Shock resistance 50 m/s²; 16 ms pulses, 1000 times each for X, Y, and Z axes
Material		PBT
Weight		Approx. 400 g

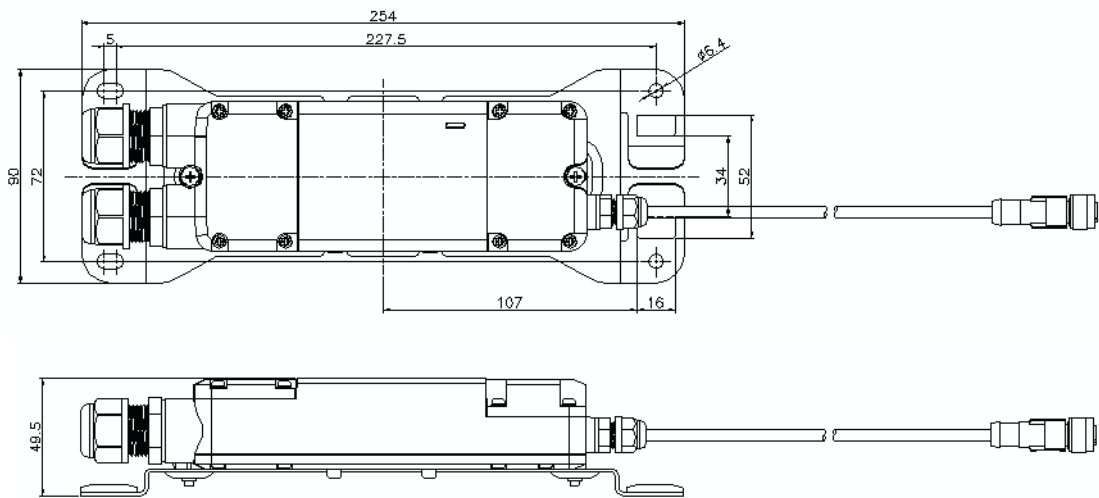
Dimensions

* Download CAD file or product manual for larger image/text and more detail.

FD—GU1



When OP-88394 is used



When mounted on FD-G

