




CV-200C

Digital 2-million-pixel Color Camera



*Please note that accessories depicted in the image are for illustrative purposes only and may not be included with the product.

 This model has been discontinued.
Compliance with the certification standard is ensured as of the time of shipment from our company.

Contact Us: 1-888-539-3623

Recommended Replaceable Products: [Environment-resistant 2 megapixel camera \(Color\) - CA-200C](#)

Specifications

Model		CV-200C
Type		Camera*1
Image element		1/1.8-inch color CCD image receiving element, square-pixel/all-pixel reading, 2,010,000 pixels Unit cell size: 4.4 x 4.4 μm 0.17 x 0.17 Mil
Valid pixel count		1,920,000 pixels 1600 (H) x 1200 (V) *2
Pixel transfer frequency		40 MHz
Scanning system		Progressive (58.5 ms: 2,000,000-pixel mode, 47.6 ms: 1,000,000-pixel mode)
Transfer system		Digital serial transfer
Electronic shutter		1/15, 1/30, 1/60, 1/120, 1/240, 1/500, 1/1000, 1/2000, 1/5000, 1/10000, 1/20000, 0.05 msec to 9000 msec can be set with numeric values.
Lens mount		C mount
Environmental resistance	Ambient temperature	0 to +40 °C 32 to 104 °F
	Relative humidity	35 to 85 % RH (No condensation)
Weight		Approx. 110 g (not including lens)

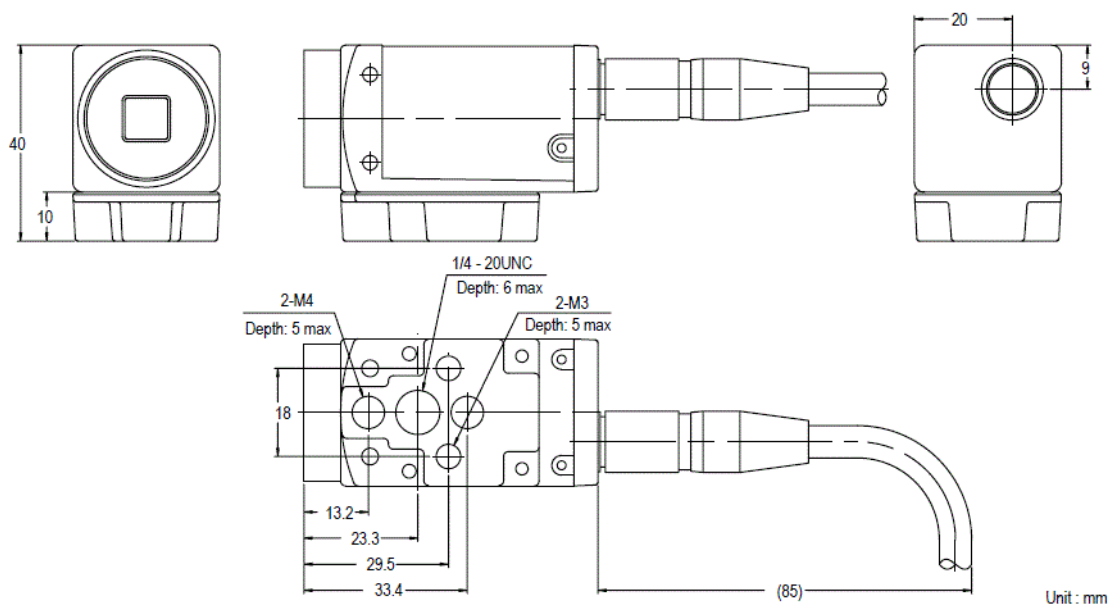
*1 The CA-CN17 camera cable (17 m [55.8'](#)) and the CA-CN17R high-flex camera cable (17 m [55.8'](#)) cannot be used.
*2 In 1,000,000-pixel mode, 980,000 pixels (1024 x 960) serve as the processing area.

Dimensions

* Download CAD file or product manual for larger image/text and more detail.

Camera (CV-200C/200M)

When plastic mount is attached (default state when shipped from factory)



When plastic mount is not attached

