



CA-LHR16

Ultra High-resolution Low-distortion Lens 16 mm

*Please note that accessories depicted in the image are for illustrative purposes only and may not be included with the product.

Specifications

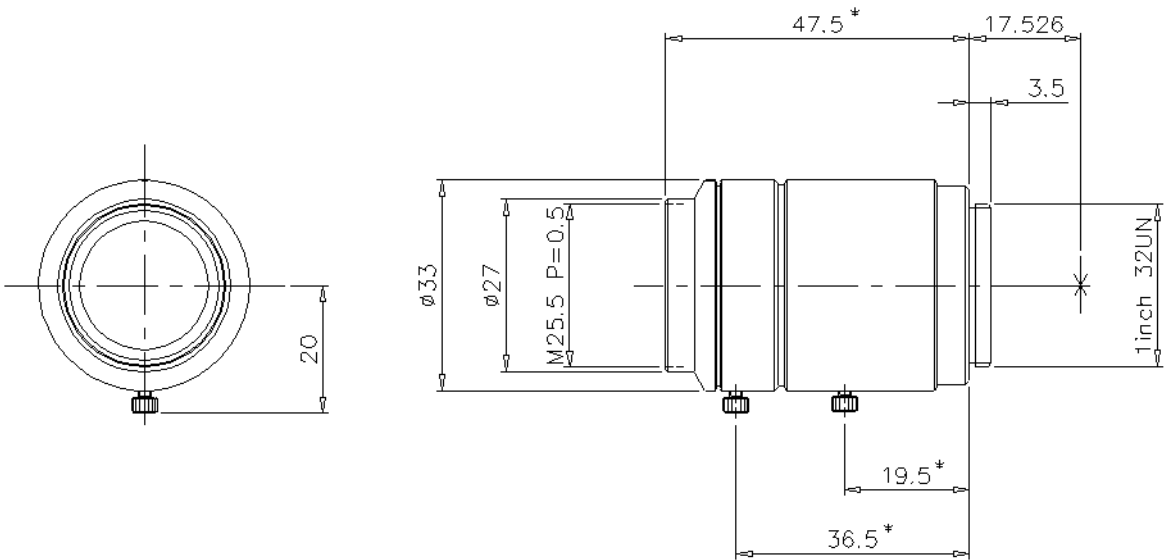
Model	CA-LHR16
Focal point	16 mm 0.63"
F-stop range (aperture)	F1.8 to F16
Minimum WD	0.1 m 0.3'
Mount	C-mount
Filter size	25.5 mm 1.00" P0.5
Compatible image sensor size	2/3"
TV distortion	-0.20 % (-0.11 %)*1
Resolving power	200 cycles/mm at center, 140 cycles/mm on periphery
Ambient temperature/humidity range	0 to +50°C 32 to 122°F, 80% RH or less (No condensation)
Lens coating	WIDE, BAND MULTICOATING
Weight	Approx. 90 g

*1 Indicates specification for compatible image sensor size. Value in parenthesis applies to 1/3" image sensor size.

Dimensions

* Download CAD file or product manual for larger image/text and more detail.

CA-LHR16



*Variable depending on the focal distance.
Extension amount : 0 to 2.5 mm